



Enterprises Inc.



Series Land Rover

Click on a Category below

Internal Engine Parts

Cylinder Head Parts

Lower Engine Parts

Clutch

Gearbox - Series IIA

Gearbox - Series III

Transfer Case

Cooling System

Fuel System

Exhaust System

Steering

Brake Drums & Friction

Brake & Clutch Hydraulics

Suspension & Wheels

Front Axle

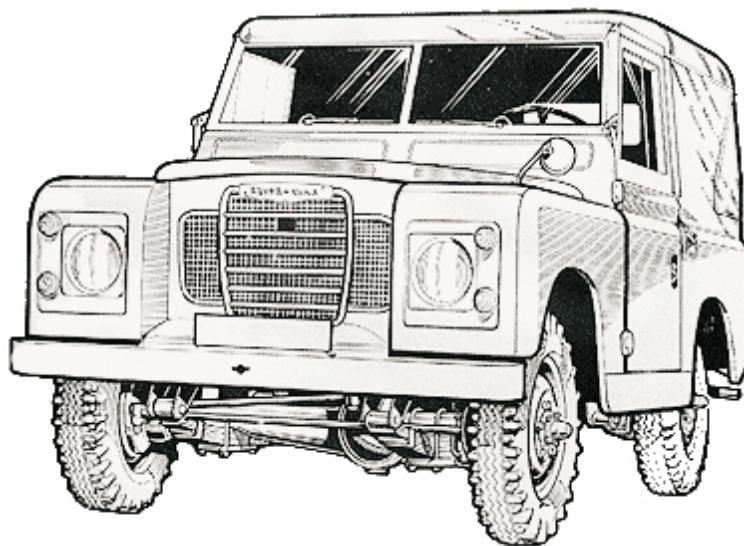
Rear Axle

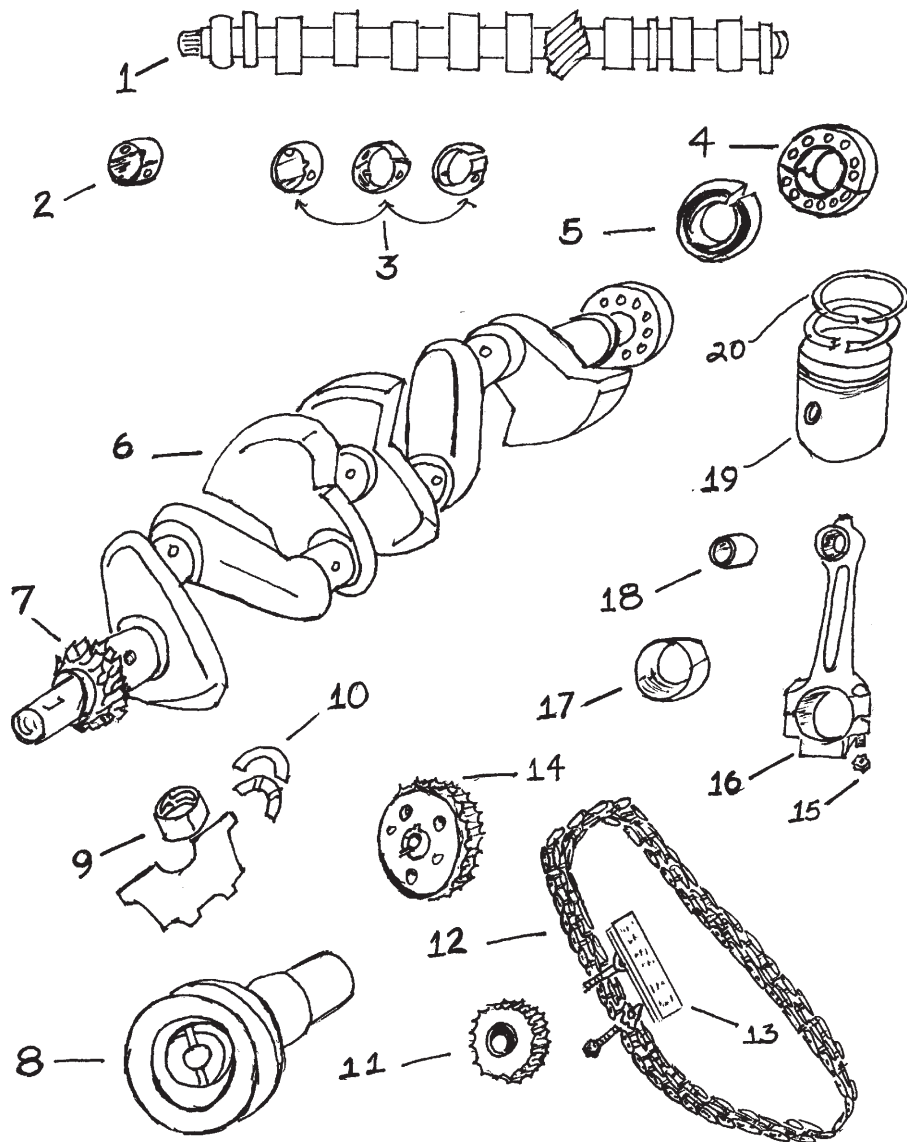
Chassis Components

Body Components

Electrical System

Parts Guide





INTERNAL ENGINE PARTS

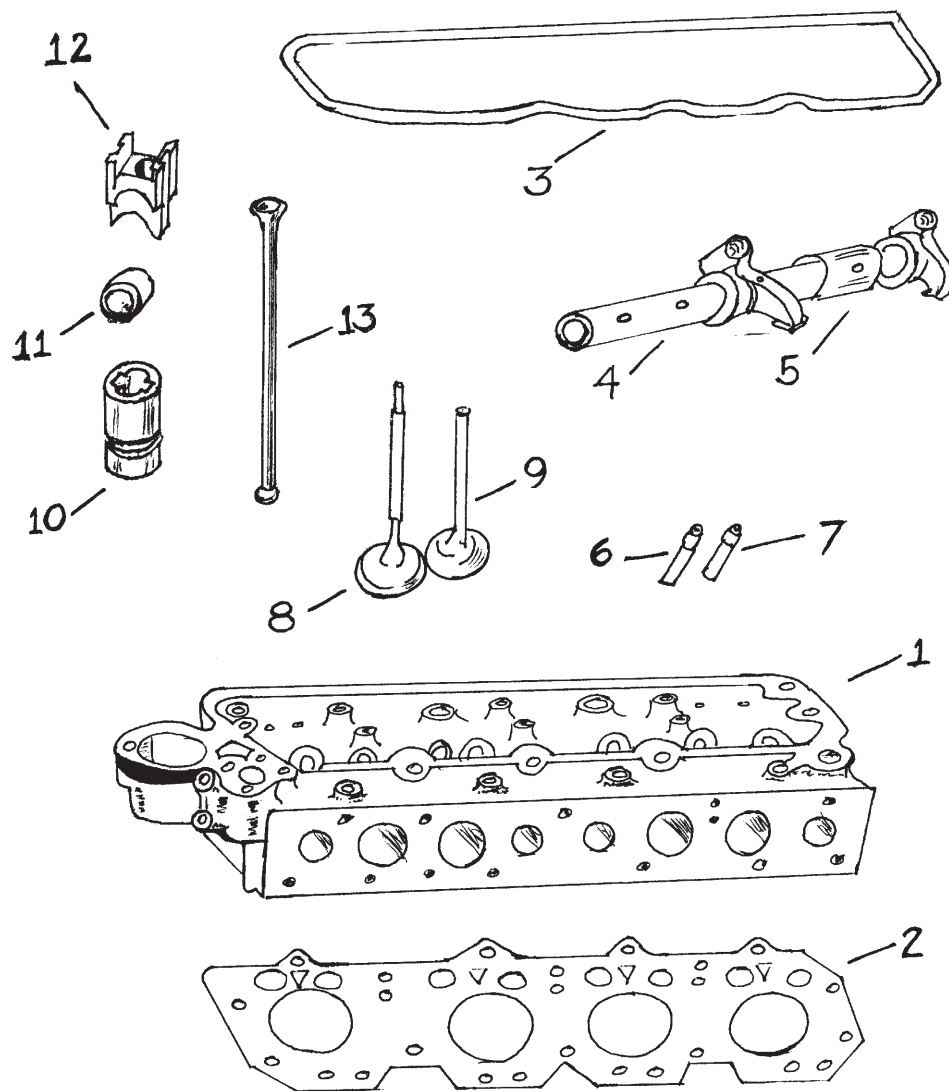
All items fit either Petrol or Diesel unless noted

Reference	Description	Part No.
1.	Camshaft (Petrol)	247709
-	Camshaft, Stage II	ETC7128
-	Camshaft (Diesel)	274711
2.	Front Camshaft Bearing (one needed)	90/519054
3.	Center and Rear Bearings (three needed)	90/519055
4.	Rear Crankshaft Seal Retainers (two needed)	523240
5.	Rear Crankshaft Seal	542492
6.	Crankshaft	527167
7.	Front Crankshaft Gear	568333
-	Key for Front Gear	235770
8.	Vibration Damper and Pulley	564375
-	Starter Dog	503665
-	Locker for Starter Dog	247771
9.	Main Bearing (Set)	Std. RTC1729
-		(.010) RTC1729/10
-		(.020) RTC1729/20
10.	Crankshaft Thrust Washers (Sold in Pairs)	Std. 538130
-		(.0025 o/s) 538131
-		(.005 o/s) 538132
-		(.0075 o/s) 538133
-		(.010 o/s) 538134
11.	Timing Chain Idler Wheel	236067
12.	Timing Chain	504375
13.	Vibration Damper for Timing Chain	275234
14.	Camshaft Timing Gear	(Petrol) 568474
15.	Nut for Connecting Rod Bolt	(8 needed) 509751
-	Connecting Rod Bolt	(8 needed) 519440
16.	Connecting Rod	(Petrol) 527164
-	(Includes: Bushing, Rod Bolts, Nuts)	(Diesel) 527169
17.	Connecting Rod Bearing Set	Std. RTC1730
-		(.010) RTC1730/10
-		(.020) RTC1730/20
18.	Wrist Pin Bushing	(Petrol) 528004
-	Wrist Pin Bushing	(Diesel) 247583
19.	Piston Assembly	Std. (Petrol) 608255
-	(Includes: Rings & Wrist Pin)	(.020) (Petrol) 597501
-		(.040) (Petrol) 597503
-		Std. (Diesel) 564229
-		(.020) (Diesel) 564231
-		(.040) (Diesel) 564233
20.	Piston Ring Set	Std. (Petrol) LRM000
-		(.010) (Petrol) LRM001
-		(.020) (Petrol) LRM002
-		(.030) (Petrol) LRM003
-		(.040) (Petrol) LRM004
-		Std. (Diesel) LRM005
-		(.010) (Diesel) LRM006
-		(.020) (Diesel) LRM007
-		(.030) (Diesel) LRM008
-		(.040) (Diesel) LRM009
-	Engine Overhaul Gasket Set	(Petrol) 608124*
-	Engine Overhaul Gasket Set	(Diesel) 525520*
*Overhaul Gasket Sets do not contain Crankshaft Seals.		
-	New Short Block Assembly 2¼ Liter Petrol	LRM017

802-885-6660

D.A.P.
Enterprises Inc.

Fax 802-885-6662

CYLINDER HEAD PARTS

<u>Reference</u>	<u>Description</u>	<u>Part No.</u>
1.	Cylinder Head , Bare (new)(Petrol)	.598089
1.	Cylinder Head Reconditioned(Petrol)	.598089R*
2.	Cylinder Head Gasket(Petrol)	.520039
3.	Valve Cover Gasket(Petrol)	.274173
-	Valve Cover Gasket(Diesel)	.GEG452
4.	Rocker Shaft(Petrol)	.554070
-	Rocker Shaft(Diesel)	.554073
5.	Rocker Arm Bushing(8 needed)(Petrol)	.247614
-	Rocker Arm Bushing Inlet(4 needed)(Diesel)	.247737
-	Rocker Arm Bushing Exhaust(4 needed)(Diesel)	.247738
6.	Valve Intake Guide(4 needed)(Petrol)	.605759**
-	Valve Intake Guide(4 needed)(Diesel)	.605482
7.	Exhaust Guide(4 needed)(Petrol)	.605760**
-	Exhaust Guide(4 needed)(Diesel)	.605483
8.	Inlet Valve(4 needed)(Petrol)	.277593
-	Inlet Valve(4 needed)(Diesel)	.527240
9.	Exhaust Valve(4 needed)(Petrol)	.557967***
-	Exhaust Valve(4 needed)(Diesel)	.550198***
-	Valve Spring Inlet or Exhaust(8 needed)	.568550
-	Valve Spring Keeper(16 needed)	.268293
10.	Tappet Guide(8 needed)	.502473
-	Screw for Tappet Guide(8 needed)	.507025
11.	Roller(8 needed)	.90/517429
12.	Lifter(8 needed)	.507026
-	Complete Assembly (Lifter, Roller, Tappet, Guide, and Screw.)	.507829
13.	Push Rod(8 needed)(Petrol)	.546798
-	Push Rod(8 needed)(Diesel)	.546799

MISCELLANEOUS

-	Tappet Adjusting Screw506814
-	Lock Nut for Above254881
-	Valve Spring Cup268292
-	Valve Grind Head Gasket Set(Petrol)	.GEG162
-	Valve Grind Head Gasket Set(Diesel)	.GEG1200
-	Inlet Valve Guide Seal554727
-	Exhaust Valve Guide Seal554728
-	Coolant temperature sender unit560794

* Includes Stellite valves and hardened seats, unleaded ready

** Silicone Bronze Guide with Umbrella Type Seal

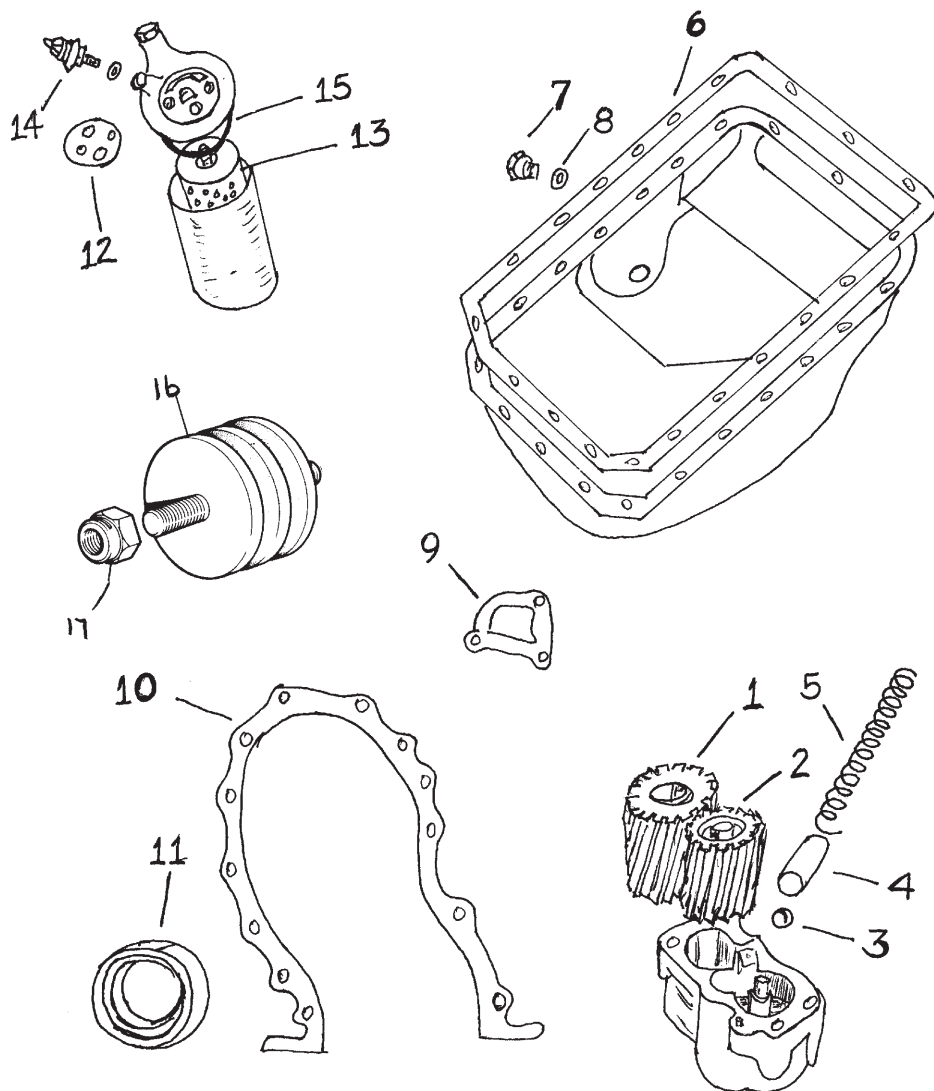
*** Stellite Coated Valve

Above Items fit either Petrol or Diesel unless noted

802-885-6660

D.A.P.
 Enterprises Inc.

Fax 802-885-6662



MISCELLANEOUS LOWER ENGINE PARTS

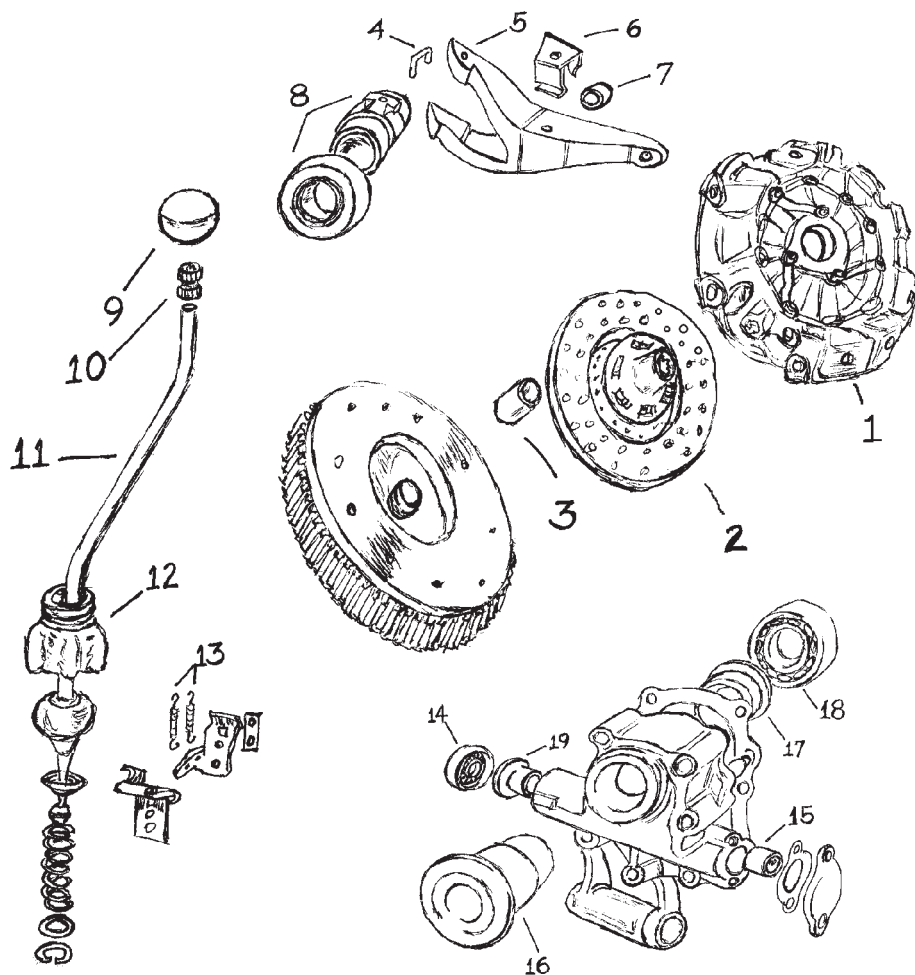
<u>Reference</u>	<u>Description</u>	<u>Part No.</u>
-	Oil Pump Assembly Complete	513640
1.	Oil Pump Gear, Driver	240555
2.	Oil Pump Gear, Idler (Aluminum)	278109
3.	Steel Ball	003748
4.	Plunger	273711
5.	Oil Pressure Relief Spring	564456
6.	Oil Pan Gasket	546841
7.	Drain Plug	536577
8.	Gasket for Drain Plug	243959
9.	Gasket on Front Cover for Water Outlet	538038
10.	Front Timing Cover Gasket	538039
11.	Front Timing Cover Seal	213744
12.	Gasket, Filter Housing to Block	598354
13.	Oil Filter 5" Long O' Ring Included	541403
-	Oil Filter 7" Long O' Ring Included	GFE144
-	Oil Filter 6 Cylinder	GFE111
14.	Oil Pressure Switch	(For idiot light) 90/519864
-	Braided Steel Oil Pressure Line	(for Dual Gauge) 279785
15.	O' Ring for Oil Filter	272539
16.	Engine Mount	(Front) 526777
-	Engine Mount	(Rear) 272191
17.	Nut for Mount	(2 needed) GHF0233

802-885-6660

D.A.P.
Enterprises Inc.

Fax 802-885-6662

*** Above items fit either Petrol or Diesel unless noted ***

**CLUTCH**

<u>Reference</u>	<u>Description</u>	<u>Part No.</u>
1.	Pressure Plate (9 1/2")	(All IIA)540700*
-	Pressure Plate (9 1/2")	(Series III)GCC181
2.	Clutch Disc (9 1/2")	(All Models)GCP129*
3.	Pilot Bushing008566
4.	Clip	(Series III)576203
5.	T/O Arm	(Series III)576137
6.	Clip	(Series III)571163
7.	Insert	(Series III)571161
8.	T/O Bearing	(Series III)GRB223
9.	Knob	(Series III)576316
10.	Ring	(Series III)571661
11.	Gear Shift Lever	(Series III)571667**
12.	Gear Lever Housing219714
-	Locating Screw for Housing90/507447
13.	Reverse Lock Out Springs514650
14.	Seal for Housing	(Series IIA)90/214787
15.	Bushing for Housing	(Series IIA)214793
16.	Sleeve for Housing	(Series IIA)231074
17.	Bushing for Housing	(Series IIA)231075
18.	T/O Bearing	(Series IIA)GHB130
19.	Bushing214794

MISCELLANEOUS

- Shift Lever Boot301437
- Boot for Low Range Lever338871
- Clutch Alignment ToolLRA065

* 9 1/2" clutch and pressure plate are a direct Replacement for the early 9" units. Both must be changed together.

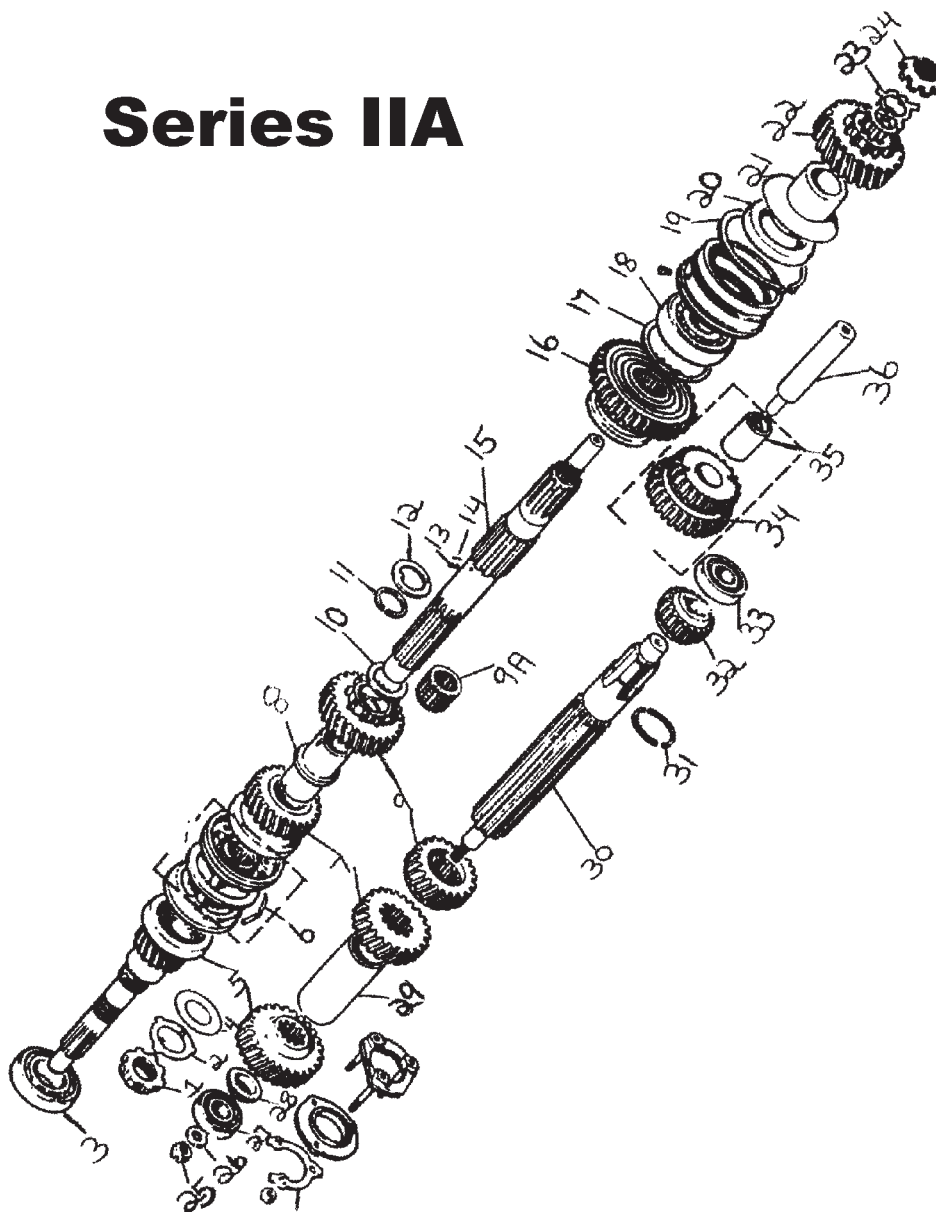
** Gear shift lever for early IIA's with the threaded knob is no longer available. Series III Gear Shift Lever must be used with Knob (#9) and Clip (#10)

802-885-6660

D.A.P.
 Enterprises Inc.

Fax 802-885-6662

Series IIA



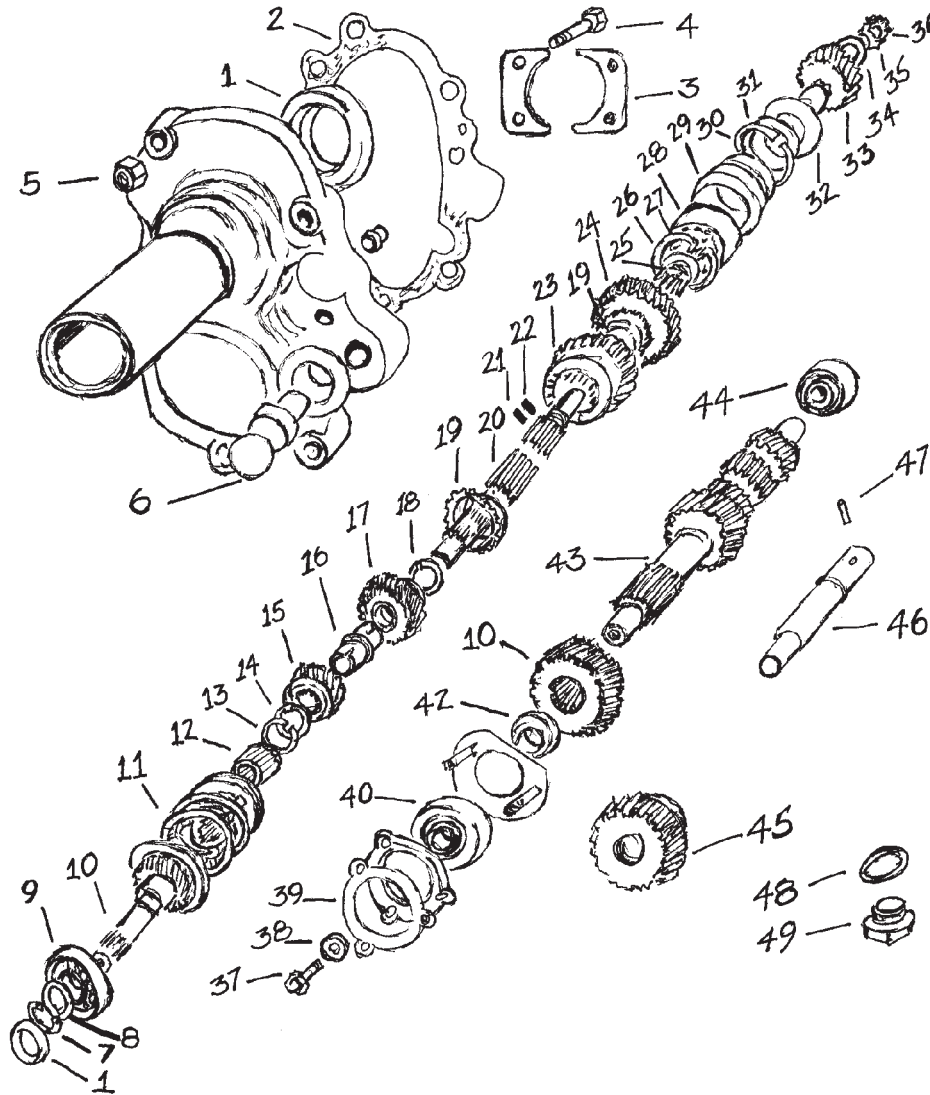
GEARBOX - SERIES IIA

Reference	Description	Part No.
-	Rebuilt Gearbox Assembly, Series IIA	LRG000
1.	Nut for Primary Pinion	213416
2.	Locker	RTC1963
3.	Primary Pinion Bearing	055714
4.	Spacer	RTC1954
5.	Primary Pinion and Constant Gear . . . (Suf. A & B)	*NLS*
-	Primary Pinion and Constant Gear . . . (Suf. C & on)	542231
6.	Synchronizer 3rd & 4th Gear	FRC1758
7.	3rd Speed Gear Set	245767
8.	Bronze Distance Sleeve	571218
9.	2nd Speed Gear Set (Suffix A-C)	245766
-	2nd Speed Gear Set (Suffix D & on)	600916
9A.	Roller Bearing	006397
10.	2nd Gear Thrust Washer 0.125"	267572
-	2nd Gear Thrust Washer 0.128"	267573
-	2nd Gear Thrust Washer 0.130"	267574
-	2nd Gear Thrust Washer 0.135"	267575
11.	Lock Ring	RTC1957
12.	Thrust Washer 0.125"	RTC1962
-	Thrust Washer 0.128"	050702
-	Thrust Washer 0.130"	050703
-	Thrust Washer 0.135"	231737
13.	Peg for Mainshaft	RTC1979
14.	Peg for Mainshaft	006405
15.	Mainshaft	264250
16.	First Speed Mainshaft Gear (Suffix A & B)	501617
-	First Speed Mainshaft Gear (Suffix C & on)	511205
17.	Circlip	009960
18.	Rear Mainshaft Bearing	001645
19.	Circlip	RTC1984
20.	Mainshaft Oil Seal	236305
21.	Oil Slinger	232415
22.	Mainshaft Gear	218244
23.	Locker	217476
24.	Nut	217477
25.	Nut (Suffix A)	RTC1983
-	Nut (Suffix B & on)	528691
26.	Washer (Suffix A)	008185
-	Washer (Suffix B & on)	528692
27.	Front Layshaft Bearing (Suffix A)	576207
-	Front Layshaft Bearing (Suffix B & on)	528701
28.	Distance Piece for Layshaft (Suffix A)	A/R
-	Distance Piece for Layshaft (Suffix B & on)	A/R
29.	Sleeve	263878
30.	Layshaft (Suffix A)	RTC1981
-	Layshaft (Suffix B & C)	528703
-	Layshaft (Suffix D & on)	556040
31.	Split Circlip (Suffix A-C)	239272
32.	First Speed Layshaft (15T) (Suffix A & B)	501616
-	First Speed Layshaft (14T) (Suffix C & on)	511189
33.	Rear Layshaft Bearing	RTC1412
34.	Reverse Idler Gear (Suffix A & B)	90/217389
-	Reverse Idler Gear (Suffix C & on)	561960
35.	Bushing	561954
36.	Shaft	561962

802-885-6660



Fax 802-885-6662

GEARBOX - SERIES III**Series III**

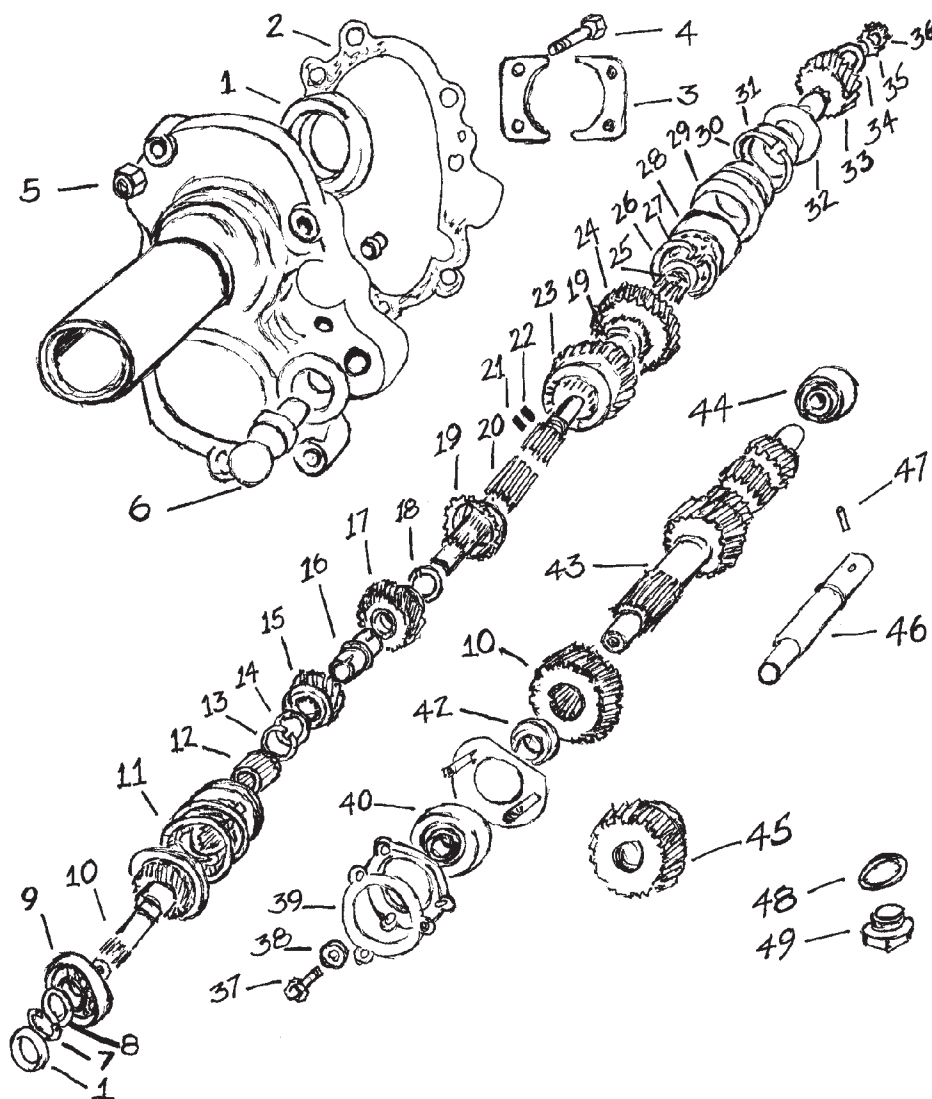
<u>Reference</u>	<u>Description</u>	<u>Part No.</u>
-	Rebuilt Gearbox Assembly, Series III	LRG001
1.	Oil Seal	571059
2.	Gasket	576724
3.	Retainer	566379
4.	Bolt	576717
5.	Nut	251321
6.	Pivot	576720
7.	Circlip	214795
8.	Thrust Washer	2.00 mm 594021
-	Thrust Washer	2.05 mm 594020
-	Thrust Washer	2.10 mm 594019
-	Thrust Washer	2.15 mm 594018
9.	Bearing	055714
10.	Primary Pinion and Constant Gear Set	606880
11.	3rd & 4th Synchro Assembly	FRC1758
12.	Bearing	006397
13.	Circlip	RTC1957
14.	3rd Speed Thrust Washer	0.125" RTC1962
-	3rd Speed Thrust Washer	0.128" 050702
-	3rd Speed Thrust Washer	0.130" 050703
-	3rd Speed Thrust Washer	0.135" 231737
15.	Third Speed Gear	556010
16.	Bronze Distance Sleeve	571218
17.	2nd Speed Gear	591363
18.	Thrust Washer 2nd Gear	0.125" 267572
-	Thrust Washer 2nd Gear	0.128" 267573
-	Thrust Washer 2nd Gear	0.130" 267574
-	Thrust Washer 2nd Gear	0.135" 267575
19.	Synchromesh Cone	591364
20.	Mainshaft	576725
21.	Peg for Mainshaft	(Small) 006405
22.	Peg for Mainshaft	(Large) RTC1979
23.	Sliding Member Assembly	608283
24.	First Speed Gear	591362
25.	Bushing for First Gear	576734
Continued.....		

802-885-6660

D.A.P.
 Enterprises Inc.

Fax 802-885-6662

Series III



GEARBOX - SERIES III

(Continued)

Reference	Description	Part No.
26.	First Speed Thrust Washer	576735
27.	Circlip	009960
28.	Bearing	001645
29.	Sleeve (Normally not serviced)	576836
30.	Circlip	RTC1984
31.	Oil Seal	236305
32.	Oil Slinger	232415
33.	Mainshaft Gear	218244
34.	Washer	501501
35.	Locker	217476
36.	Nut	217477
37.	Special Bolt	561601
38.	Washer	576907
39.	Locker	528603
40.	Front Layshaft Bearing	528701
41.	Plate	528685
42.	Distance Piece	0.405 528720
-	Distance Piece	0.425 528721
-	Distance Piece	0.445 528722
43.	Layshaft Assembly	576686
44.	Rear Layshaft Bearing	RTC1412
45.	Reverse Idler Gear	576707
46.	Shaft for Reverse Idler	591527
47.	Lock Peg	591519
48.	Drain Plug Crush Washer, Gearbox & Transfer Case	515599
49.	Drain Plug for Gearbox	540870

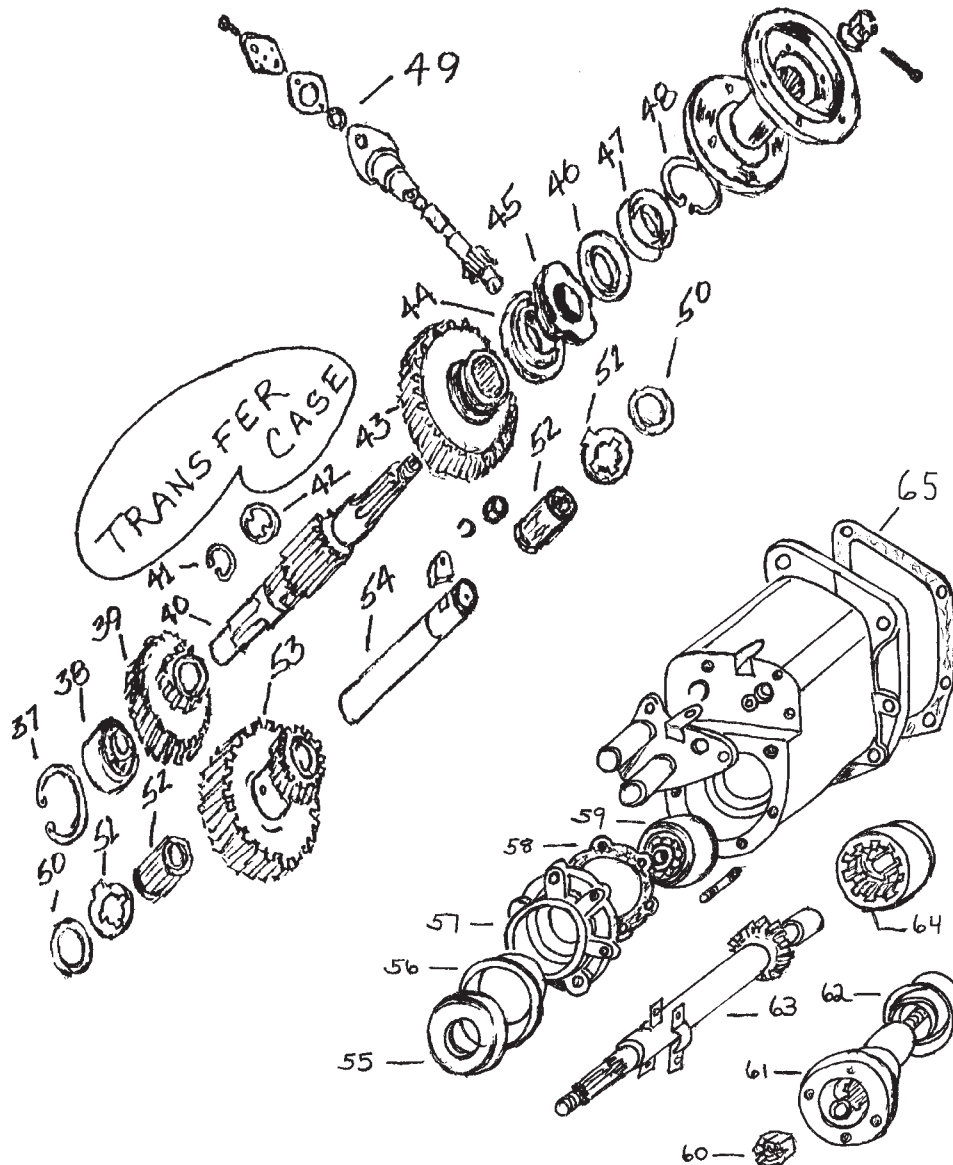
MISCELLANEOUS

-	Gearbox and Transfer Case Gasket Set	600603
---	--------------------------------------	--------

802-885-6660



Fax 802-885-6662

TRANSFER CASE

<u>Reference</u>	<u>Description</u>	<u>Part No.</u>
37.	Circlip	217330
38.	Front Output Bearing	217490
39.	High Gear Wheel	218243
40.	Output Shaft	591429
41.	Circlip	CCN122
42.	Spacer	90/217488
43.	Low Gear Wheel	(Suffix A & B) 235438
-	Low Gear Wheel	(Suffix C & on) 532979
44.	Rear Output Bearing	90/217512
45.	Worm Gear, Speedometer Drive	540004
46.	Rear Output Seal	(F & R same) 236417
47.	Mudshield	236074
48.	Circlip	217546
49.	Speedo Pinion Oil Seal	211502
50.	Shim Intermediate Gear	(Suffix A) 234835
-	Shim Intermediate Gear	(Suffix B & on) 561197
51.	Thrust Washer Intermediate Gear	(Suffix A) 219469
-	Thrust Washer Intermediate Gear	(Suf.B & on) 521328
52.	Roller Bearing Intermediate Gear	(Suffix A) 219466
-	Roller Bearing Intermediate Gear	(Suffix B) 599869
53.	Intermediate Gear	(Suffix A) 219468
-	Intermediate Gear	(Suffix B) 521330
-	Intermediate Gear	(Suffix C & on) 533080
54.	Intermediate Gear Shaft	(Suffix A) 278025
-	Intermediate Gear Shaft	(Suffix B & on) 594195
55.	Output Oil Seal	(F & R same) 236417
56.	Mudshield	236548
57.	Retainer	236541
58.	Gasket	FRC1511
59.	Front Output Bearing	217325
60.	Nut	003259
61.	Driving Flange	539993
62.	Mudshield	236074
63.	Shaft	243611
64.	Locking Dog	233241
65.	Gasket, Gearbox to Transfer Case	622048

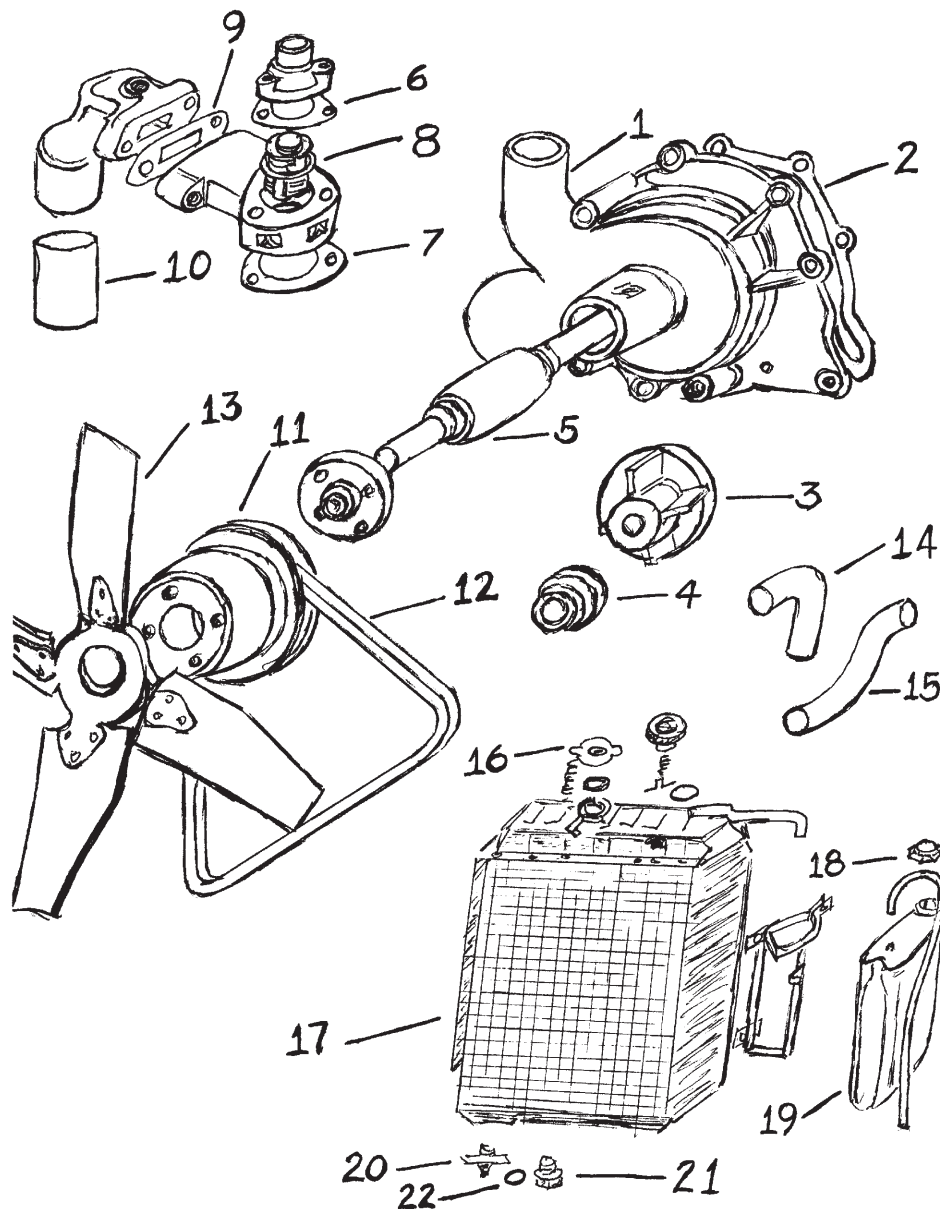
MISCELLANEOUS

- Gasket Set for Gearbox & Transfer Case 600603

802-885-6660

D.A.P.
 Enterprises Inc.

Fax 802-885-6662



COOLING SYSTEM

Reference	Description	Part No.
1. Water Pump	(Series IIA & III)	GWP312
- Water Pump	(24 Volt Military)	549735*
2. Gasket		538671
3. Impeller		247916
4. Seal and Ring		568301
5. Spindle and Bearing		523354
6. Thermostat Housing Gasket		527110
7. Thermostat Housing Gasket		527110
8. Thermostat - 164 Degrees	(Series IIA & III)	GTS109
- Thermostat - 180 Degrees		GTS102
- O-Ring for Thermostat		GTG109
9. By Pass Gasket		511958
10. By Pass Hose		574871
11. Pulley - Single Groove		530890
12. Fan Belt		GFB124
13. Fan Blade		512018
14. Top Hose	(Early IIA - Up to 1968)	GRH439
- Top Hose	(Late IIA & III)	GRH585
15. Lower Hose	(Early IIA)	GRH369
- Lower Hose	(Late IIA & III)	GRH609
16. Radiator Cap		GRC118
17. Radiator Assembly	(Replaces all Years)	577609
18. Cap for Overflow Bottle		564719
19. Overflow Bottle		564718
20. Pet Cock for Radiator		602915
21. Drain Plug for Radiator		569047
22. Gasket for Drain Plug		213959

NOTES

When replacing thicker radiator (early IIA) with 557609, later hoses must be used.

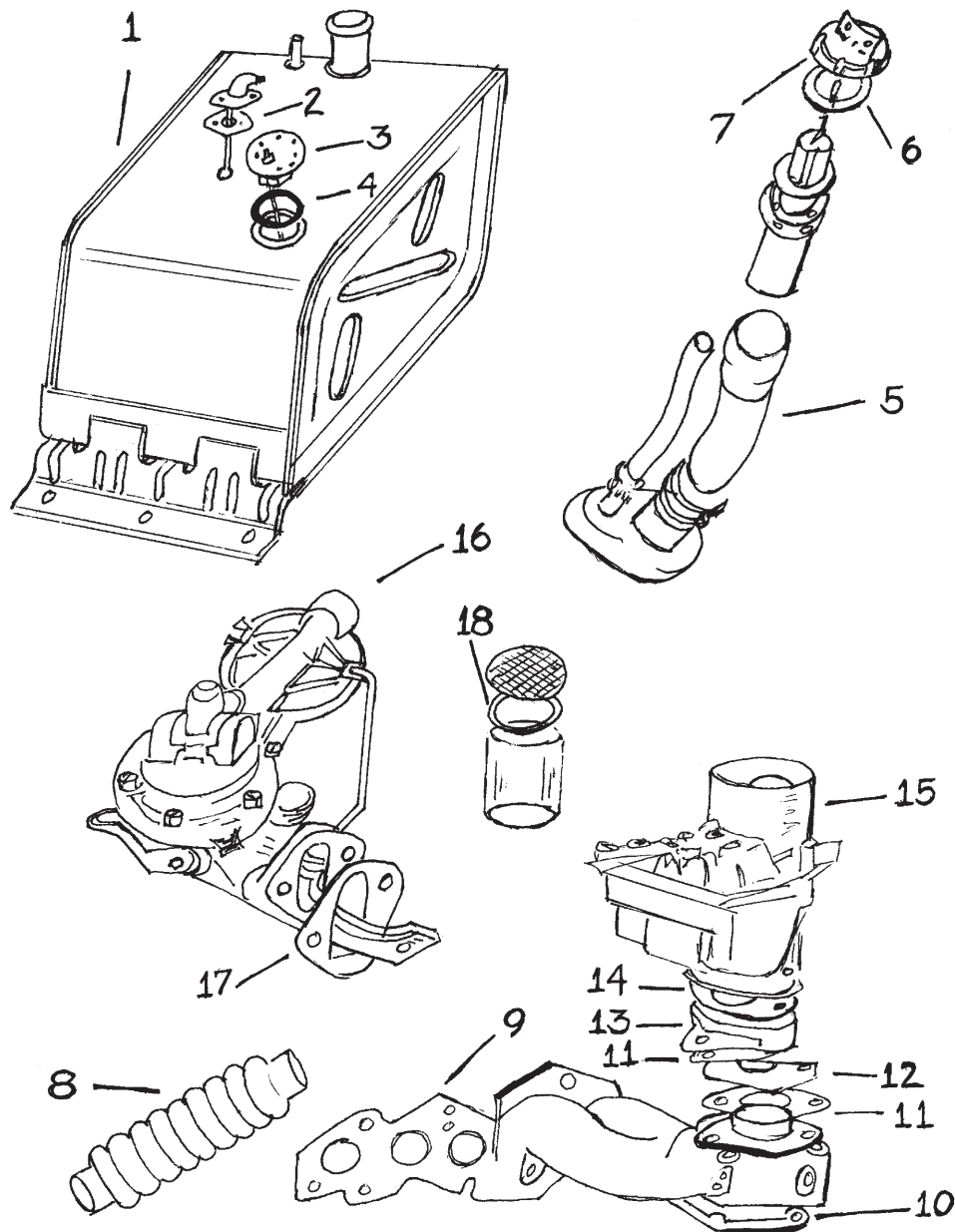
*Some military cooling system components and water pumps are different than above

*** Above items fit either Petrol or Diesel unless noted. ***

802-885-6660

D.A.P.
Enterprises Inc.

Fax 802-885-6662

**FUEL SYSTEM**

Reference	Description	Part No.
1.	88" Fuel Tank, HD	LRA029
-	88" Fuel Tank, Stainless Steel	LRA029S/S
-	88" Fuel Tank- Auxiliary or Military Type . . . (fills under seat)	LRA030
-	109" Fuel Tank - Station Wagon . . . (Not Shown)	543164
2.	Gasket	267837
3.	Sending Unit 88"	(Petrol) (Neg Earth) . . . 555844
-	Sending Unit 109"	(Petrol) (Neg Earth) . . . 555846
-	Sending Unit 88"	(Diesel) (Neg Earth) . . . 555845
-	Sending Unit 88"	(Military) (24 Volt) . . . 530008
4.	Gaskets for all Senders	546488
5.	Filler Hose 88"	543764
-	Filler Hose 109" Station Wagon . . . (Not Shown)	543782
6.	Gasket for Filler Cap	505244
7.	Filler Cap (2 Lug)	504655
-	Filler Cap (3 Lug)	(Non-Vented) . . . 577467
-	Filler Cap -Old Style	(Vented-Early 60's) . . . 277260
8.	Air Cleaner Hose	(Petrol) . . . 517903
-	Air Cleaner Hose	(Diesel) . . . 90/509730
-	Elbow to Carb Hose	554418
9.	Gasket Manifold to Head	(Petrol) . . . 274171
-	Gasket Manifold to Head	(Diesel) . . . GEG685
10.	Gasket Between Inlet and Exhaust Manifold	247824
11.	Gasket	278163
12.	Packing Piece	278162
13.	Adapter-(needed when replacing Solex with Zenith or Weber)	554175
14.	Gasket	554163
15.	Carburetor	(Solex Type) . . . 546029
-	Carburetor	(Zenith) . . . 598107Z
-	Carburetor	(Weber replaces Zenith) . . . 598107W
16.	Fuel Pump	(Petrol or Diesel) . . . 549761
17.	Gasket	275565
18.	Gasket for Bowl	27H1330

MISCELLANEOUS

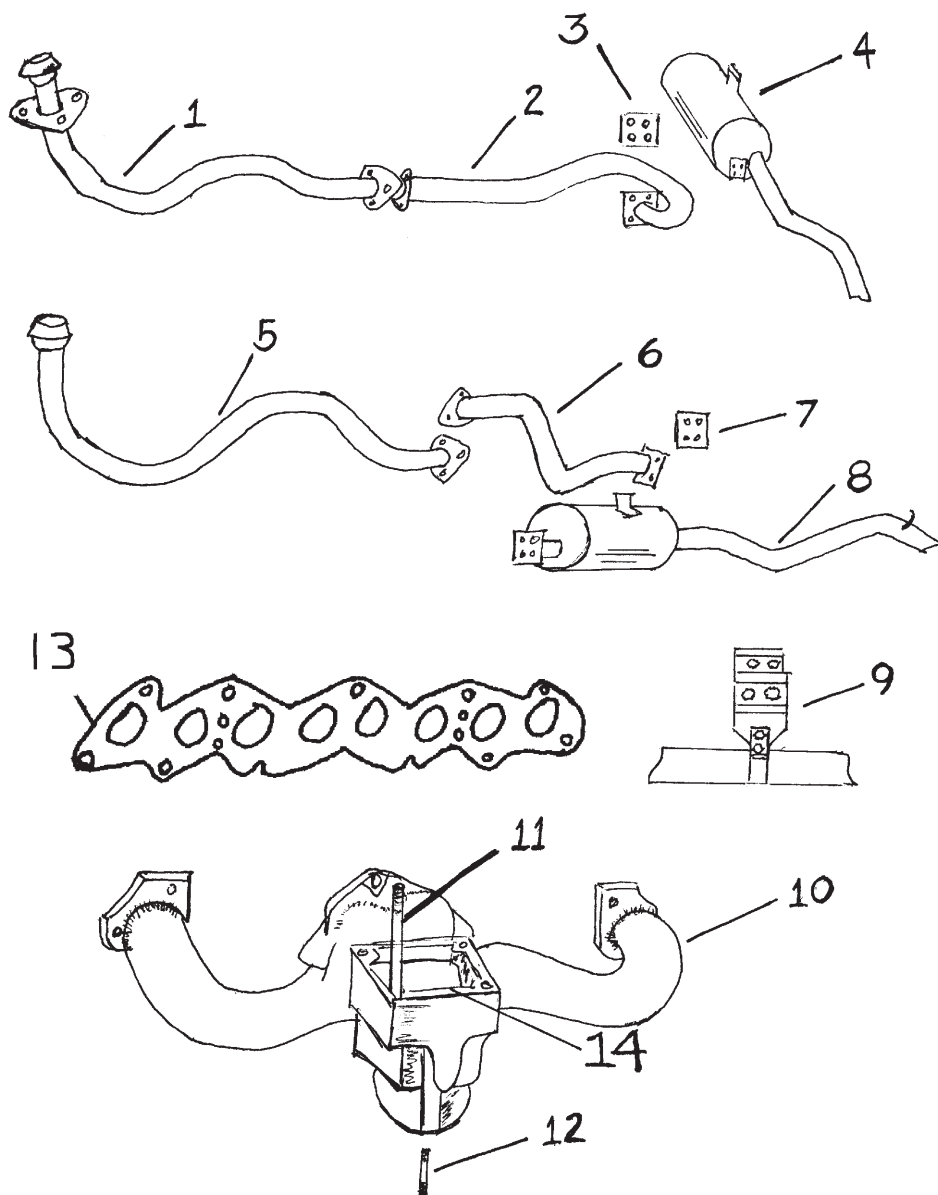
-	Rebuild Kit for Zenith Carburetor	605092
-	Gasket Kit for Zenith Carburetor	605093
-	Rebuild Kit for Solex Carburetor	507687
-	Gasket Kit for Solex Carburetor	507693
-	Rebuild Kit for Weber Carburetor	598107K
-	Rebuild Kit for Fuel Pump	272069
-	Fuel Filter Element for Diesel	90/517711
-	Accelerator Pump for Solex Carburetor	503900
-	Needle Valve, Zenith Carburetor	601900
-	Float for Zenith Carburetor	601858
-	Ball Socket Joint for Throttle Linkage Arms	531324
-	In Line Fuel Filter	606168
-	Canister Type Fuel Filter	(Series III) . . . 606204

*** Above items fit either Petrol or Diesel unless noted.***

802-885-6660

D.A.P.
Enterprises Inc.

Fax 802-885-6662



EXHAUST SYSTEM

<u>Reference</u>	<u>Description</u>	<u>Part No.</u>
1.	88" Front Pipe(Petrol)	GEX1372
-	88" Front Pipe(Diesel) (Side Outlet)-Early ..	GEX1369
2.	88" Intermediate Pipe(Petrol)	GEX1373
-	88" Intermediate Pipe(Diesel)	GEX1370
3.	Gasket Intermediate Pipe to Muffler	213358
4.	88" Muffler and Tailpipe	GEX3309
5.	109" Front Pipe(Petrol)	GEX1376
-	109" Front Pipe(Diesel)	GEX1563
-	109" Front Pipe(Petrol) Military 2 door	GEX1372
6.	109" Intermediate Pipe(Petrol) 2 door model	GEX1375
-	109" Intermediate Pipe(Sta/Wgn, Petrol and Diesel) ..	GEX1377
-	109" Intermediate Pipe (Military 2 door with dual tanks - Petrol) ..	501221
7.	Gasket Intermediate Pipe to Muffler	213358
8.	109" Muffler and Tailpipe(Sta/Wgn & Diesel)	GEX3478
9.	88" Intermediate Hanger Assembly	LRA045*
-	88" Tailpipe Hanger Assembly	LRA047*
-	88" Muffler Hanger Assembly	LRA046*
-	109" Intermediate Hanger Assembly	LRA048*
-	109" Muffler Hanger Assembly	LRA046*
-	109" Tailpipe Hanger Assembly	LRA047*
10.	Exhaust Manifold(Petrol)	598473
11.	Stud Connecting Inlet and Exhaust Manifolds (4 needed)	574048
12.	Stud Connecting Lower Pipe to Manifold(3 needed)	568664
-	Brass Nuts for above Studs	LRH005
13.	Gasket - Manifold to Head(Petrol)	274171
-	Gasket - Manifold to Head(Diesel)	GEG685
14.	Gasket Between Inlet & Exhaust Manifolds	247824

MISCELLANEOUS

- Stud Kit Fixing Manifolds to Cylinder Head
- Replacement Rubber Strap for all Hangers
- Front Pipe 109" Station Wagon(6 cylinder)
- Intermediate Pipe 109" Station Wagon(6 cylinder)
- Muffler 109" Station Wagon(6 cylinder)
- Tailpipe 109" Station Wagon(6 cylinder)

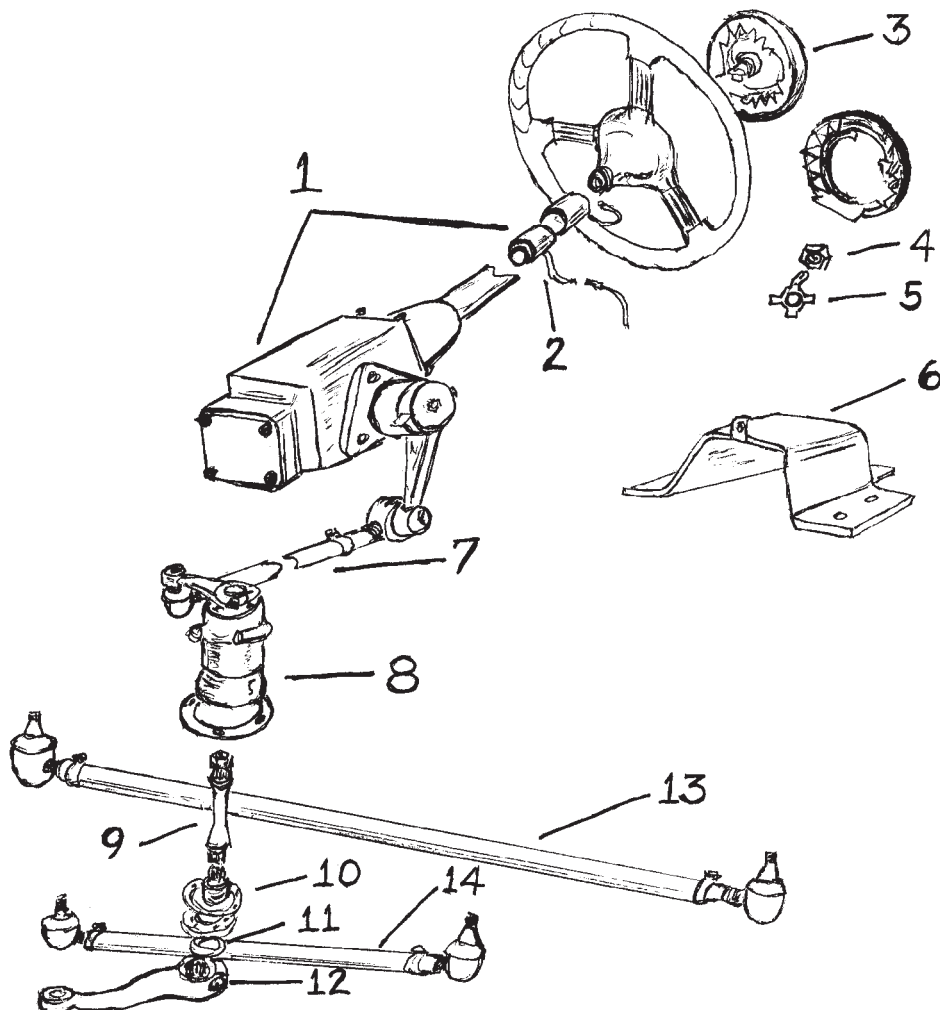
*Complete with Stainless Steel Hardware

**6 Cylinder exhaust pipes listed above
will not mate up to Original NADA system,
but can be changed as a complete system.

802-885-6660

D.A.P.
Enterprises Inc.

Fax 802-885-6662

STEERING

Reference	Description	Part No
1.	Steering Box and Column Assy LHD ..(68-71, Series IIA)	577184
-	Steering Box and Column Assy LHD ..(72 & Up , Series III) . .	592993
2.	Dust Cover and Horn Contact(Up to Suffix B)	512359*
-	Dust Cover and Horn Contact(Suffix C onward)	552575*
3.	Horn Push and Cover	90/575201*
4.	Nut(Suffix C onward)	552804
5.	Tag Washer	552572
6.	Steering Box Cover	330460
7.	Steering Rod Assembly(Complete)	90/608462
-	Ends for Steering Rod(RH Thread)	231183G
-	Ends for Steering Rod(LH Thread)	231184G
-	Steering Rod End Clamp	577898
-	Steering Rod End Clamp Bolt	256006
-	Steering Rod End Clamp Nut	GHF0221
8.	Steering Relay(Assembly)	543878
9.	Shaft for Relay	562875
-	Bushings for Shaft(4)	537877
10.	Gasket for Retainer	90/624436
11.	Oil Seal	213340
12.	Lower Relay Arm	535286
13.	Tie Rod Assembly(Complete)	608465
-	Tube Only	526994
-	Ends for Tie Rod(RH Thread)	231183G
-	Ends for Tie Rod(LH Thread)	231184G
-	Tie Rod End Clamp	577898
-	Tie Rod End Clamp Bolt	256006
-	Tie Rod End Clamp Nut	GHF0221
14.	Relay Rod	269270
-	Ends for Relay Rod(RH Thread)	231183G
-	Ends for Relay Rod(LH Thread)	231184G
-	Relay Rod End Clamp	577898
-	Relay Rod End Clamp Bolt	256006
-	Relay Rod End Clamp Nut	GHF0221

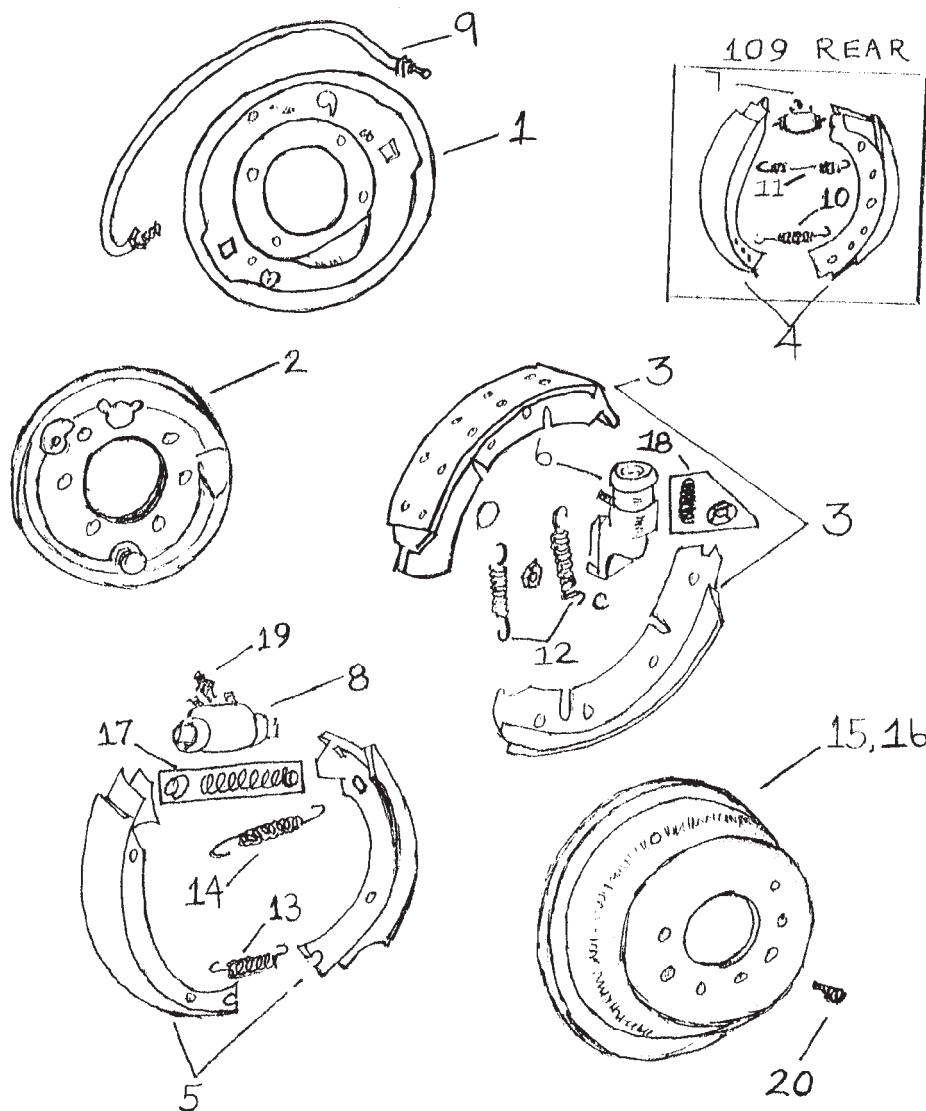
* Center Push Horn Models.

802-885-6660

D.A.P.
 Enterprises Inc.

Fax 802-885-6662

BRAKE DRUMS & FRICTION



<u>Reference</u>	<u>Description</u>	<u>Part No.</u>
1.	Brake Backing Plate 109" 4 Cyl. LH	246565
-	Brake Backing Plate 109" 4 Cyl. RH	246566
2.	Brake Backing Plate 88" 4 Cyl. LH	515406
-	Brake Backing Plate 88" 4 Cyl. RH	515405
3.	Front Brake Shoes 109" 4 Cyl. (Axle Set)	GBS160
-	Front Brake Shoes 109" 6 Cyl. (Axle Set)	GBS179
4.	Rear Brake Shoes ALL 109" (Axle Set)	GBS550
5.	Front or Rear Brake Shoes 88" (Axle Set)	GBS728
6.	Wheel Cylinder LF 109" 4 Cyl. (2 Needed)	GWC303
-	Wheel Cylinder RF 109" 4 Cyl. (2 Needed)	GWC304
-	Wheel Cylinder LF 109" 6 Cyl. (2 Needed)	GWC301
-	Wheel Cylinder RF 109" 6 Cyl. (2 Needed)	GWC302
7.	Wheel Cylinder ALL 109" Rear RH	243296
-	Wheel Cylinder ALL 109" Rear LH	243297
8.	Wheel Cylinder LF 88"	243297
-	Wheel Cylinder RF 88"	243296
-	Wheel Cylinder RR 88"	243302
-	Wheel Cylinder LR 88"	243303
9.	Connecting Pipe 109" 4 Cyl.	233122
-	Connecting Pipe 109" 6 Cyl.	600206
-	Connecting Pipe 88" (Dual Braking Sys. Series IIA & III)	577679
10.	Spring (Abutment End) All 109" Rear	531893
11.	Spring (Wheel Cylinder End) All 109" Rear	548169
12.	Spring All 109" Front	234889
13.	Lower Brake Spring 88"	218983
14.	Upper Brake Spring 88"	503981
15.	Brake Drum 109" 4 Cyl. Front or Rear (Ch. Suffix A-G)	516599
-	Brake Drum 109" 4 Cyl. Front or Rear (Ch. Suffix H-on)	576973
-	Brake Drum 109" 6 Cyl. Front	576974
16.	Brake Drum 88" Series IIA Rear	591661
-	Brake Drum 88" Series III Rear	591039
17.	Wheel Cylinder Kit 88" Front	275744*
-	Wheel Cylinder Kit 88" Rear	266687*
18.	Wheel Cylinder Kit 109" Front 4 Cyl.	266684*
-	Wheel Cylinder Kit 109" Front 6 Cyl.	600210*
-	Wheel Cylinder Kit Fits All 109" Rear	275744*
19.	Bleed Screw (Fits all Wheel Cyl. 88" & 109")	556508
20.	Brake Drum Screw (Fits All 88" & 109")	001510

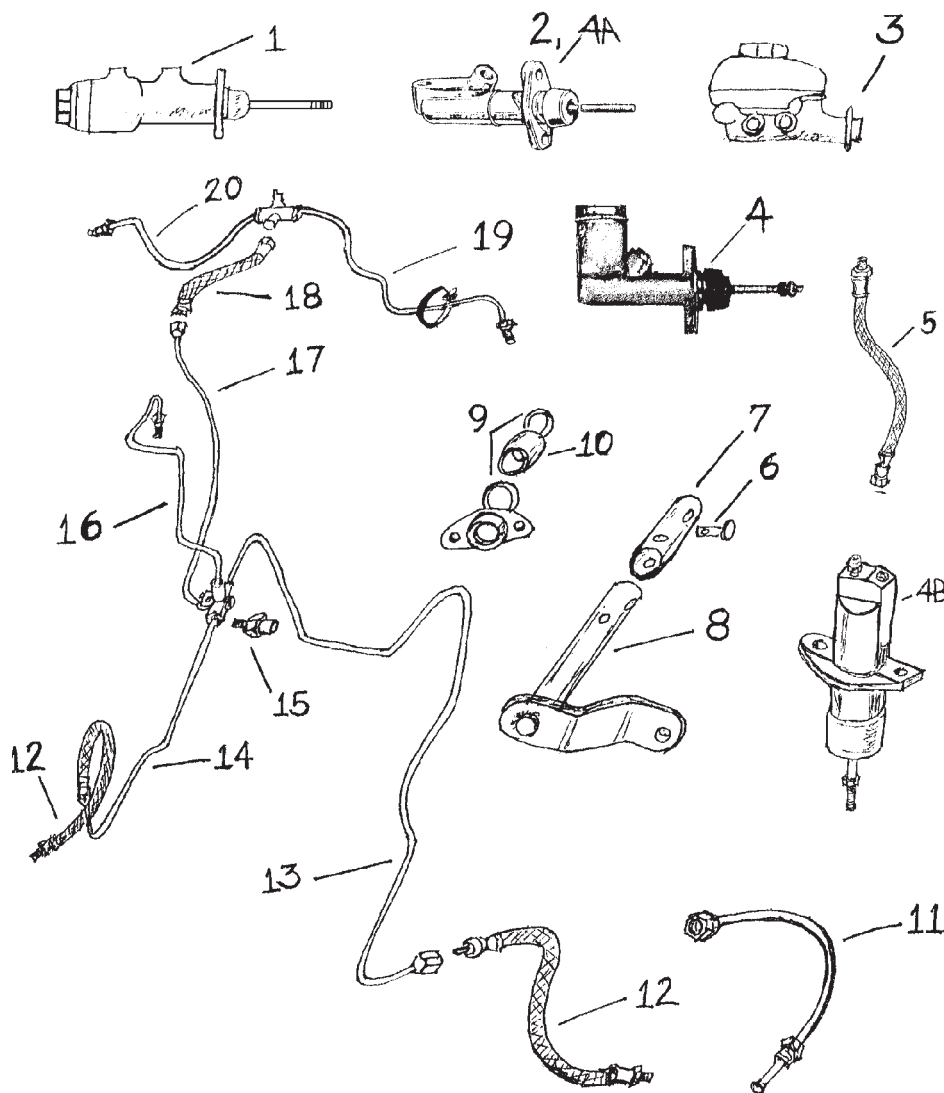
MISCELLANEOUS

-	Emergency Brake Shoes	GBS552
-	Hand Brake Shoe Return Springs	515465
-	Brake Cam Adjuster Kit (one kit does a complete 88", two kits are needed for a 109")	BA144
-	Castrol/Girling Brake Fluid	LRF003

802-885-6660

D.A.P.
Enterprises Inc.

Fax 802-885-6662

BRAKE & CLUTCH HYDRAULICS

Reference	Description	Part No.
1.	Brake Master Cylinder, Small, 1 1/4" Nut(CB Type)	GMC314
-	Brake Master Cylinder, Large, 1 1/2" Nut(CB Type)	GMC312
2.	Brake Master Cylinder(CV Type)	GMC310
3.	Brake Master Cylinder(Dual Braking System)	GMC320
-	Replacement Reservoir for above Master Cylinder	LRA042
-	Brake Booster Unit	569338
4.	Clutch Master Cylinder (Integral Reservoir)	550732
4A.	Clutch Master Cylinder (External Reservoir) ..(CV Type)	GMC310
4B.	Clutch Slave Cylinder(All Series IIA)	266694
-	Clutch Slave Cylinder(Series III)	591231
5.	Clutch Slave Cylinder Flex Hose 3/16" (Most Series IIA)	GBH134
-	Clutch Slave Cylinder Flex Hose 1/4" (Later Series IIA)	552057
-	Clutch Slave Cylinder Flex Hose(Series III)	NRC2129
6.	Pin(2 needed)	536803
7.	Connecting Tube	561661
8.	Clutch Operating Shaft(Series IIA)	537603
9.	Felt Ring	217985
10.	Bearing	90/217984
11.	Brake Line(Series III only)	577679
12.	Flexible Brake Hose(Series IIA)	GBH134
-	Flexible Brake Hose(Series III)	GBH130
13.	Left Front Brake Line(Series III)	565466
-	Left Front Brake Line(Series IIA)	592549
14.	Right Front Brake Line(Series IIA)	277923
-	Right Front Brake Line(Series III)	592364
15.	Brake Light Switch(Hydraulic)	560775
-	Brake Light Switch(Mechanical)	575166
16.	Pipe - Junction to Master Cylinder	512838
17.	Pipe - Junction to Rear Hose 88"	279418
-	Pipe - Junction to Rear Hose 109"	279452
18.	Flex Hose to Rear Axle 88"	GBH134
-	Flex Hose to Rear Axle 109"	GBH302
19.	Left Rear Brake Line	504517
20.	Right Rear Brake Line	531906

MISCELLANEOUS

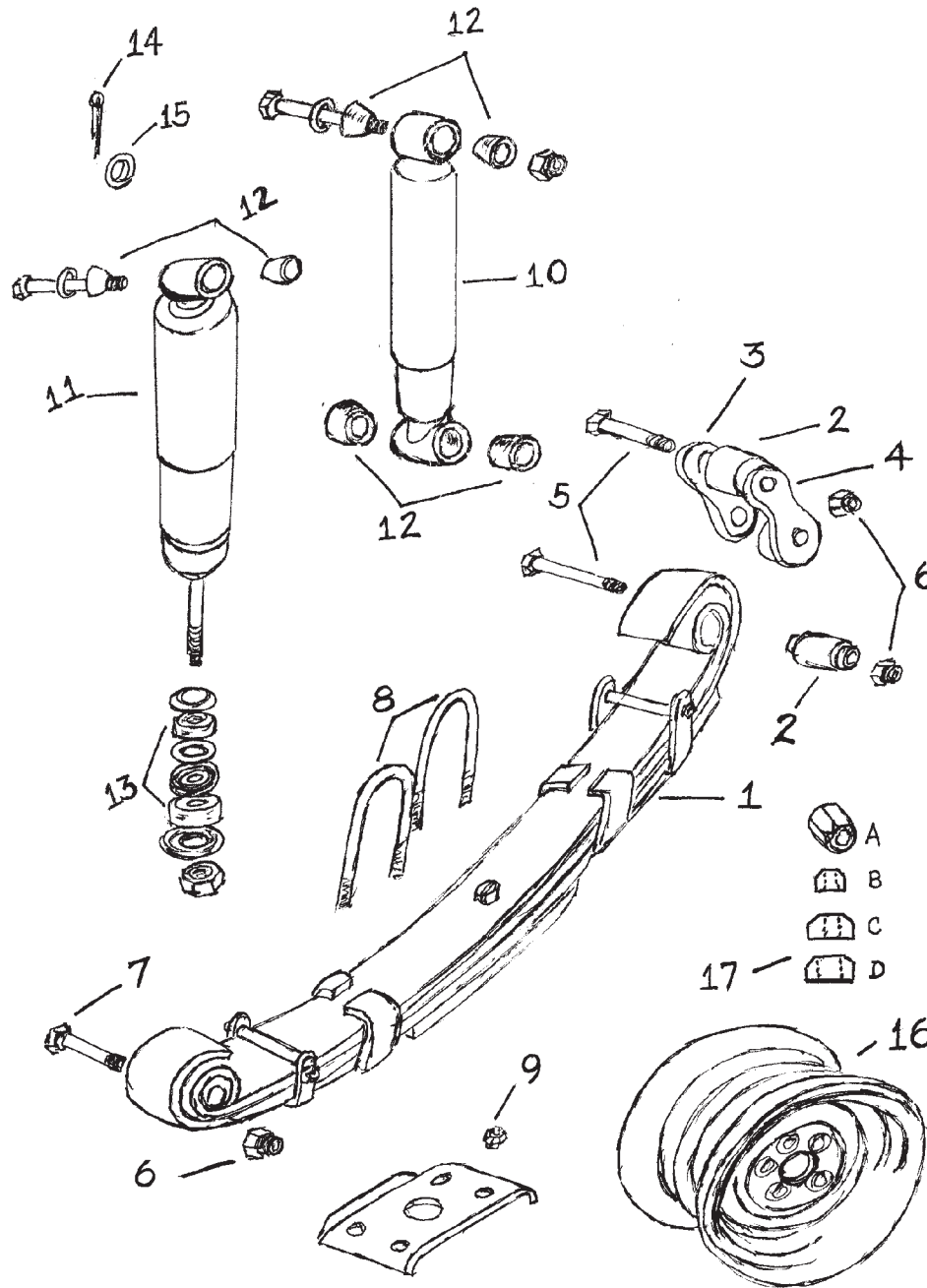
-	Castrol/Girling Brake Fluid	LRF003
-	Copper Ring between Hose and Cylinder	233220
-	Rebuild Kit for Dual Masters with Slanted Resv. or 1" Bore	607726
-	Rebuild Kit for Dual Master Cylinders with .875 Bore	606422
-	Rebuild Kit for Clutch Master and/or CV Master	601611
-	Rebuild Kit for GMC314	502333
-	Rebuild kit for GMC312	605127
-	Rebuild Kit for ALL Clutch Slave Cylinders	502335
-	Brake and Clutch Pedal Pads	GLR302
-	Emergency Brake Boot - suffix A-C, (Fits Straight Lever)	330347
-	Emergency Brake Boot - suffix D-on (Fits Curved Lever)	338780

802-885-6660

D.A.P.
 Enterprises Inc.

Fax 802-885-6662

SUSPENSION SYSTEMS & WHEELS



Reference	Description	Part No.
1.	Front Spring 88"(9 Leaf)	241283*
-	Front Spring 109"(11 Leaf)	265627*
-	Rear Spring 88"	517589*
-	Rear Spring 109" 5 Door	279678*
-	Rear Spring 109" 2 Door	272967*
2.	Spring Bushing	548205
-	Frame Bushing	569746
3.	Spring Shackle (Front Spring) 88" & 109"	270520
-	Spring Shackle (Rear Spring) 88"	244162
-	Spring Shackle (Rear Spring) 109"	279970
4.	Threaded Spring Shackle (Front Spring) 9/16" 88" & 109"	537687
-	Threaded Spring Shackle (Rear Spring) 9/16" 88"	537686
-	Threaded Spring Shackle (Rear Spring) 9/16" 109"	537685
5.	Bolt (Rear of Rear Spring)	537740
-	Bolt (Rear of Front Spring)	537742
6.	Nut 9/16"	252165
7.	Bolt (Front of Front Spring)	537741
-	Bolt (Front of Rear Spring)	537741
8.	U-Bolt (Front Spring) 88" Petrol(3 Needed)	562637
-	U-Bolt (Front Spring) 88" Petrol(1 Needed)	562641
-	U-Bolt (Front Spring) 88" Diesel(3 Needed)	543108
-	U-Bolt (Front Spring) 88" Diesel(1 Needed)	569028
-	U-Bolt (Front Spring) 109" Petrol(3 Needed)	543108
-	U-Bolt (Front Spring) 109" Petrol(1 Needed)	569028
-	U-Bolt (Rear Spring) All 88" and 109"(4 Needed)	242127
9.	Nut for All U-Bolts	251323
10.	Shock Absorber Front 88"	GSA195
-	Shock Absorber Rear 88"	GSA199
11.	Shock Absorber Front 109"	GSA196
-	Shock Absorber Rear 109"	GSA200
12.	Shock Bushing	552819
13.	Shock Bushing (109" Lower)	552818
14.	Cotter Pin	004063
15.	Washer	264024
16.	16" Road Wheel (For tires up to 7 X 16)	231601
-	16" Road Wheel (For tires larger than 7 X 16)	NRC7578
17A.	Lug Nut - Double Sided (Old Style)	217361
17B.	Lug Nut - Single Sided (Early IIA) Same ID as above	561254
17C.	Lug Nut - Larger OD (Later IIA) Same ID as above	576103
17D.	Lug Nut - Larger ID (Series III) Same OD as above	90/577473

802-885-6660

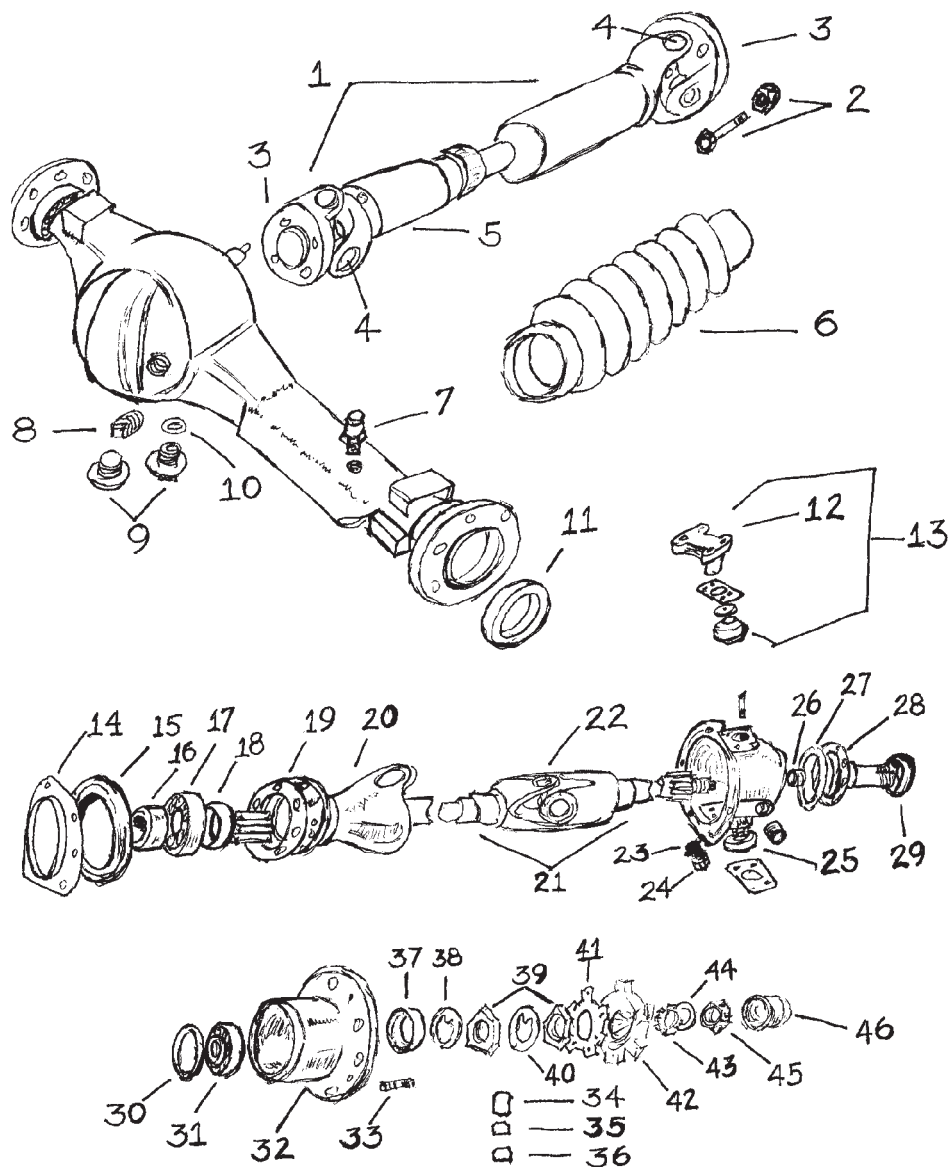
D.A.P.
Enterprises Inc.

Fax 802-885-6662

MISCELLANEOUS

- 109" Military Shock Absorbers (Front)GSA411
- 109" Military Shock Absorbers (Rear)GSA412

* All springs supplied with bushings

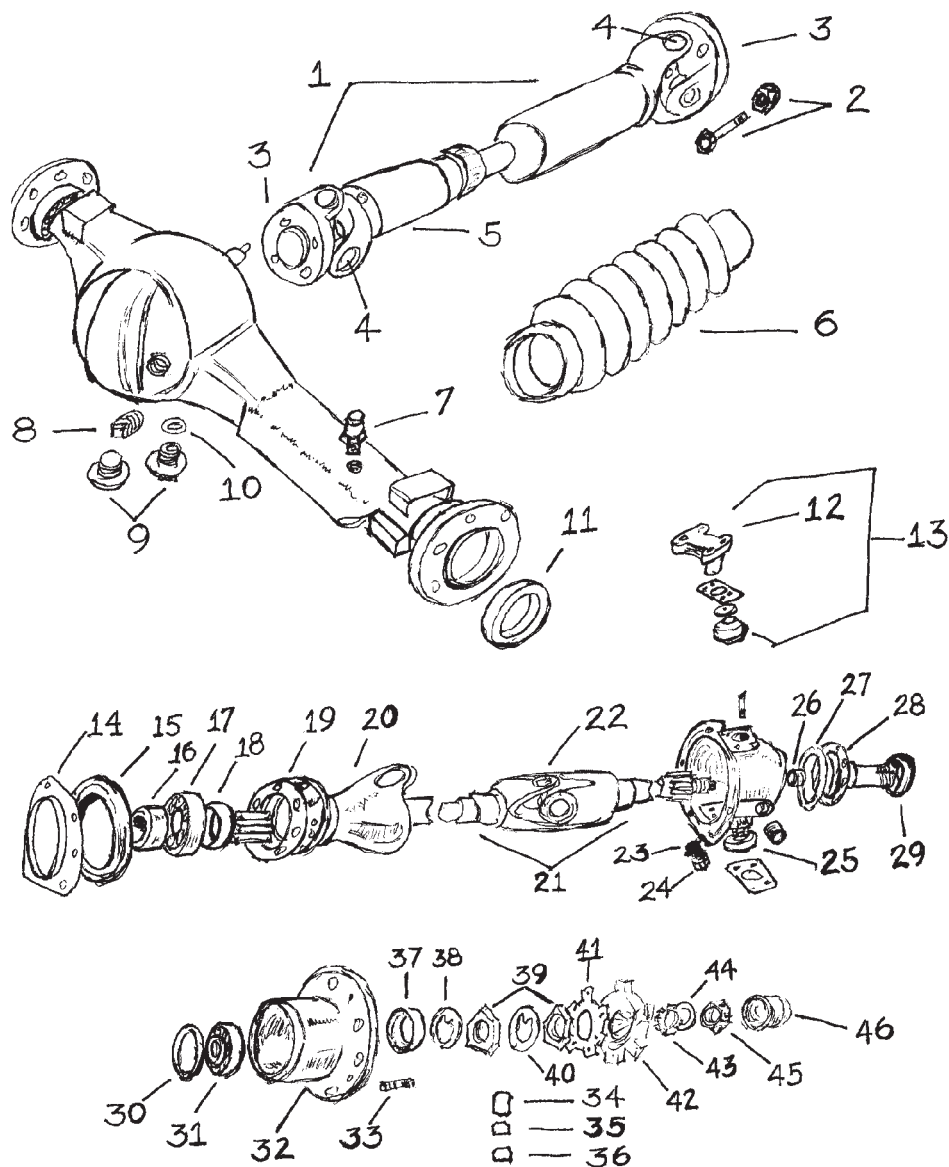
**FRONT END**

<u>Reference</u>	<u>Description</u>	<u>Part No.</u>
1.	Drive Shaft Assembly (Comes with Late Type Universal Joint) . . .	553000
2.	Driveshaft Fixing Bolt	509045
-	Nut for above	509751
3.	Flange - Large (For use with U-Joint 541858)	600656
-	Flange - Small (For use with U-Joint 043023)	262469
4.	Universal Joint (Late type 3 7/32" across)	541858
-	Universal Joint (Early type 2 5/16" across)	043023
5.	Splined Stub Shaft (Uses 043023 U-Joint)	262468
-	Splined Stub Shaft (Uses 541858 U-Joint)	008407
6.	Boot	276484
7.	Axle Breather	515845
8.	Plug	003294
9.	Plug (Suffix A-G)	235592
-	All others	540870
10.	Gasket	515599
11.	Oil Seal	217400
12.	Swivel Pin (One Piece Type)	576583
-	Swivel Pin Bushing	539742
-	Swivel Pin Washer	528702
13.	Complete Swivel Pin Kit	
	Does both sides, Includes Shims, Bushings & 2 Piece Type Pin . . .	532268
14.	Retainer for Oil Seal	235968
15.	Swivel Oil Seal	GHS1003
16.	Retaining Collar for Bearing	90/217398
17.	Bearing for Half-Shaft	244150
18.	Distance Piece for Bearing	244151
19.	Gasket for Housing (Swivel Ball to Axle Housing)	GFG107
20.	Swivel Ball	234789
21.	Halfshaft Complete RH	269265
-	Halfshaft Complete LH	269266
22.	Universal Joint for Halfshaft	043023
23.	O-Ring for Drain Plug	230511
24.	Drain Plug	236070
25.	Bearing for Swivel Pin Lower	217268
-	O-Ring for Lower Steering Arm	531433
	Continued.....	

802-885-6660

D.A.P.
 Enterprises Inc.

Fax 802-885-6662



FRONT END (Continued)

<u>Reference</u>	<u>Description</u>	<u>Part No.</u>
26.	Bushing for Driving Shaft (Early Stub Axles Only)217354
27.	Gasket (Stub Axle to Swivel Housing)GFG108
28.	Stub Axle599826
29.	Distance Piece for Hub Seal599698
30.	Oil Seal for Inner Bearing239422
31.	Inner Wheel BearingGHB162
32.	Front Hub	(Series IIA) .561889
-	Front Hub	(Series III) .576844
33.	Stud for Lugnut (Threaded)	(Series IIA) .561590
-	Stud for Lugnut (Press in)	(Series IIA) .561886
-	Stud for Lugnut (Press in)	(Series III) .576825
34.	Lug Nut (Double End)	(Early IIA) .217361
35.	Lug Nut Same ID as above	(Late IIA) .576103
36.	Lug Nut Larger ID, Same OD as above	(Series III) .90/577473
37.	Outer Wheel BearingGHB163
38.	Key Washer217352
39.	Nut90/217355
40.	Locker217353
41.	Gasket231505
42.	Drive Flange571235
-	Drive Flange Bolt215331
43.	Felt Washer501412
44.	Plain Washer571922
45.	Slotted Nut003259
46.	Hub Cap219098

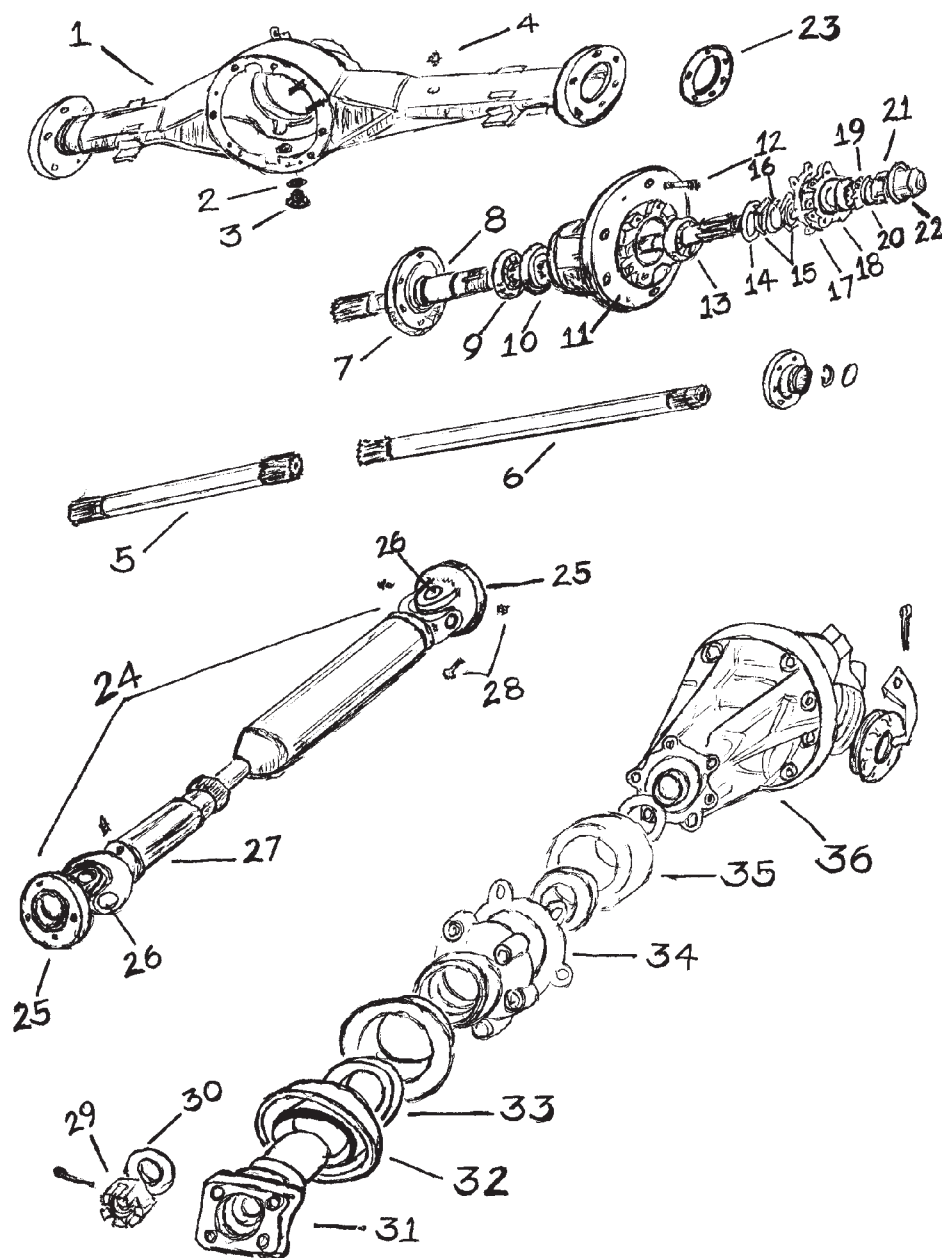
MISCELLANEOUS

- Gaiter Kit for Swivel Ball
- Differential Pinion Oil Seal (F & R are the same)
- Differential Housing Gasket (F & R are the same)
- Hub Nut Socket Tool

802-885-6660

D.A.P.
Enterprises Inc.

Fax 802-885-6662

**REAR END**

Reference	Description	Part No.
1.	Rear Axle Housing 88"	622284
-	Rear Axle Housing 109"	591544
2.	Drain Plug O-Ring	515599
3.	Drain Plug	235592
4.	Breather for Axle Housing	515845
5.	Axle Shaft RH	(short) 591378
6.	Axle Shaft LH	(long) 591379
7.	Rear Stub Axle	599828
8.	Distance Sleeve	599698
9.	Oil Seal for Inner Bearing	239422
10.	Inner Hub Bearing	GHB162
11.	Rear Hub Assembly	Series IIA 561889
-	Rear Hub Assembly	Series III 576844
12.	Stud for Lug Nut (Threaded)	Series IIA 561590
-	Stud for Lug Nut (Press In)	Series IIA 561886
-	Stud for Lug Nut (Press In)	Series III 576825
13.	Outer Hub Bearing	GHB163
14.	Key Washer	217352
15.	Nut Locking Wheel Bearing	90/217355
16.	Locker	217353
17.	Gasket for Drive Flange	231505
18.	Drive Flange	571235
19.	Felt Washer	501412
20.	Plain Washer	571922
21.	Slotted Nut	003259
22.	Hub Cap	219098
23.	Gasket (Stub Axle to Housing)	GFG103
24.	Drive Shaft Assembly 88"	553001
-	Drive Shaft Assembly 109" 4 Cylinder	553002
25.	Flange (For use with Large U-joint)	600658
-	Flange (For use with Small U-joint)	262469
26.	Universal Joint (Late Type 3 7/32" Across)	541858
-	Universal Joint (Early Type 2 15/16" Across)	043023
27.	Splined Stub Shaft (Use 043023 U-Joint)	262468
-	Splined Stub Shaft (Use 541858 U-Joint)	008407
28.	Driveshaft Fixing Bolt	509045
-	Nut for Above	509751
29.	Nut	003259
30.	Washer	513454
31.	Drive Flange	236632
32.	Mudshield	236072
33.	Pinion Oil Seal (F & R are the same)	217507
34.	Gasket for Retainer	553412
35.	Bearing	(Suffix A) 219550
-	Bearing	(Suffix B on) 539707
36.	Differential Assembly Complete (F & R are the same)	594484*

802-885-6660

D.A.P.
 Enterprises Inc.

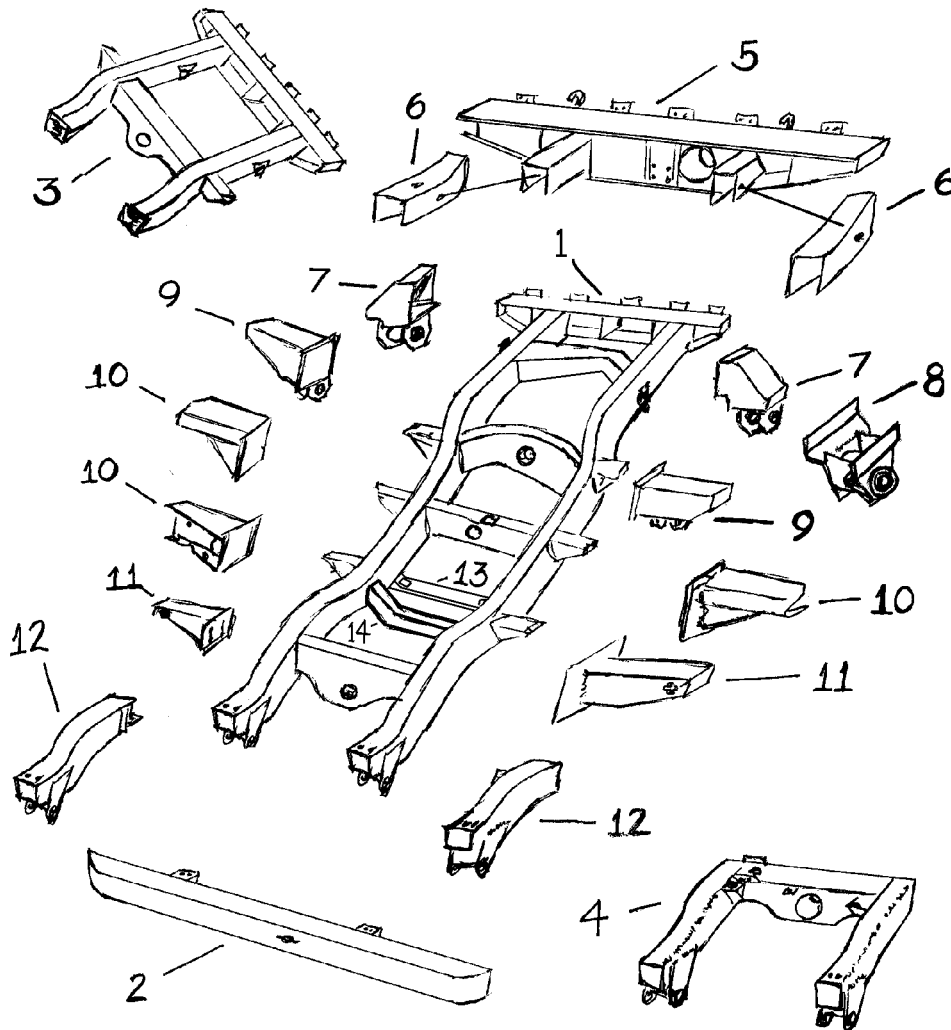
Fax 802-885-6662

 © 1987-1999 D.A.P. Enterprises Inc.
 Manufacturer's numbers used for reference only
MISCELLANEOUS

- Gasket for Differential Assembly (F & R are the same) 007316

*Rebuilt Unit, Core required

CHASSIS COMPONENTS



<u>Reference</u>	<u>Description</u>	<u>Part No.</u>
1.	Complete Galvanized Frame 88"	LRC1
-	Complete Galvanized Frame 109"	LRC2
2.	Front Galvanized Bumper	564704
3.	Rear 1/2 Frame 88" only	NRC0236.5
4.	Front Frame Horn and Cross Member Assembly	LRC59
-	(Left hand or Right hand drive)	
5.	Rear Cross-Member with Extensions	NRC0236
6.	Rear Frame Extensions	LRC29
7.	Rear Spring Rear Perch 109" only	LRC8A
8.	Rear Spring Hanger 88" only	LRC44
9.	Rear Spring Front Perch 109" only	LRC8
10.	Fuel Tank Outriggers (Depending on Fuel Tank Location)	LRC7R
-	(LH Rear or RH Front)	
-	Fuel Tank Outriggers (Depending on Fuel Tank Location)	LRC7L
-	(RH Rear or LH Front)	
11.	Front Firewall Outrigger	LRC6
12.	Front Frame Horn (Specify LH or RH)	LRC57
13.	Transmission Cross-Member 88"	218453
-	Transmission Cross-Member 109" 4 Cylinder	592592
14.	Engine Crossmember	577414

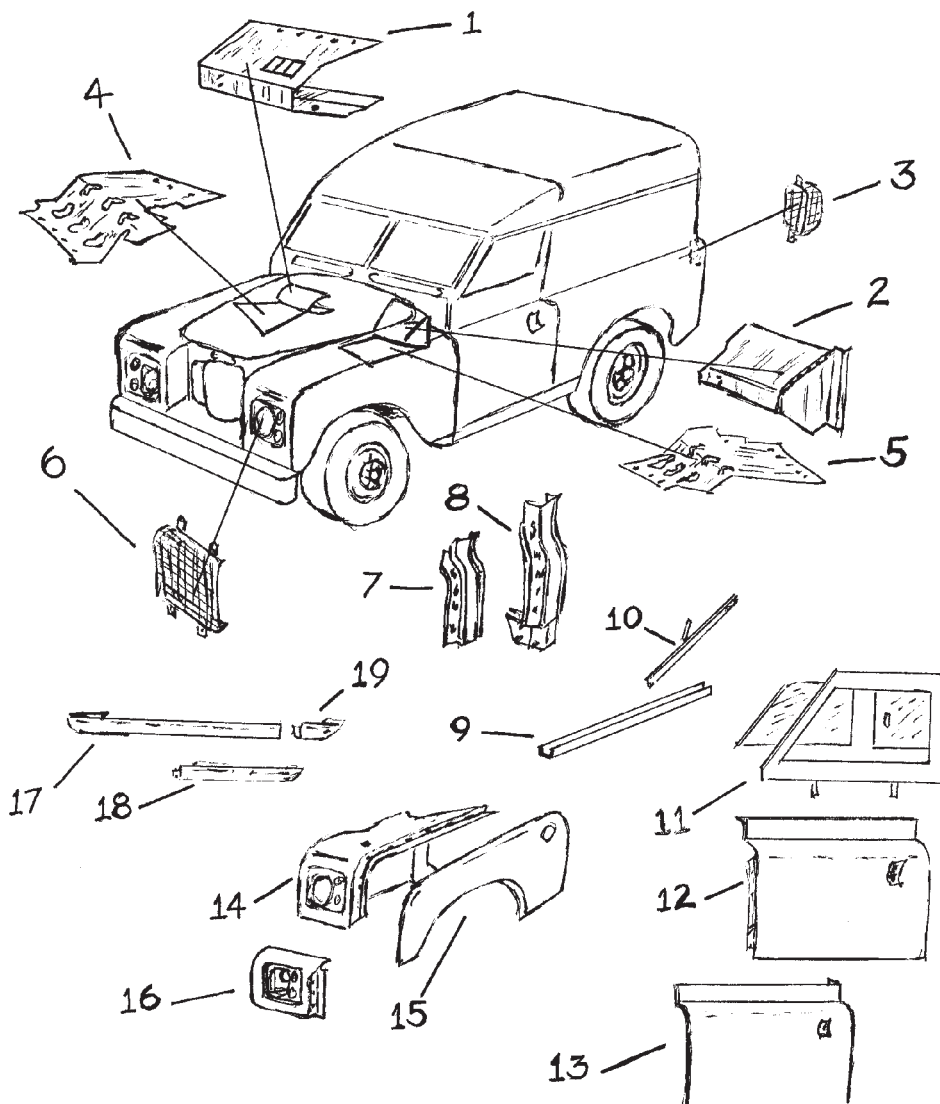
MISCELLANEOUS

-	Suspension Bump Stops	(4 needed)	241380
-	Axle Rebound Strap 88"		274469
-	Axle Rebound Strap 109"		278698

802-885-6660



Fax 802-885-6662

BODY PARTS

<u>Reference</u>	<u>Description</u>	<u>Part No</u>
1.	Footwell Assembly - Passenger Side . .(LHD)	LRB006
2.	Footwell Assembly - Drivers Side . .(LHD)	LRB005
3.	Rear Galvanized Lamp Guard	GLR357W*
4.	Fender Splash Shield RF(IIA)	330444
-	Fender Splash Shield RF(III)	MRC6083
5.	Fender Splash Shield LF(IIA)	330447
-	Fender Splash Shield LF(III)	MRC6084
-	Steering Box Cover	330460
6.	Front Lamp Guard (For Vehicles with Lights in Fender)	345985
7.	Firewall Stem Repair Section W/O Bracket	LRB023**
8.	Firewall Stem Repair Section With Bracket	LRB024**
9.	Repair Section for Door Frame	LRB015
10.	Felt Window Tracks for Sliding Windows, All Models:	
-	Front Door TOP (2)	336451
-	Front Door LOWER (2)	347488
-	Front Door VERTICAL (2)	336454
-	Rear Sliding Windows TOP (4)	348393
-	Rear Sliding Windows LOWER (4)	348396
-	Rear Sliding Windows VERTICAL (4)	336454
-	109" Sta/Wgn Rear Door TOP (2)	347489
-	109" Sta/Wgn Rear Door LOWER (2)	347489
-	109" Sta/Wgn Rear Door VERTICAL (2)	336454
11.	Door Top RH (No Glass or Tracks)	320853
-	Door Top LH (No Glass or Tracks)	320854
-	Door Top RH (Complete with Glass & Tracks)	330157
-	Door Top LH (Complete with Glass & Tracks)	330158

Continued.....

MISCELLANEOUS

-	Windshield Frame Seal, Upper & Lower	395430
-	Windshield Glass	345421
-	Hood Bumper on Firewall	332647
-	Bonnet Welting Strip	300824
-	Hood Hinge Bushings (Series III)	346849

* Vehicles with Lights in Grille can use
this Part# to fit Front Wing Lights.

** Specify LH or RH with these items.

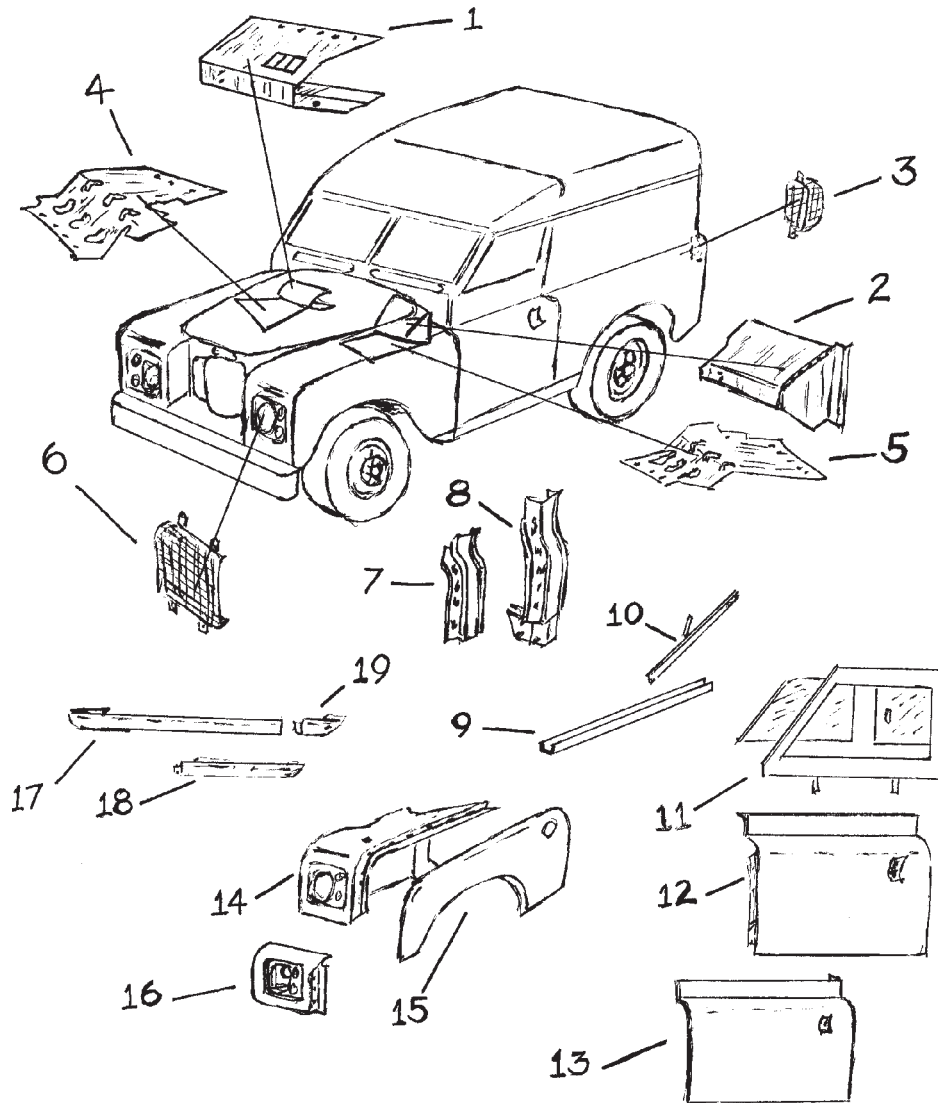
802-885-6660

D.A.P.
Enterprises Inc.

Fax 802-885-6662

BODY PARTS

(Continued)



Reference	Description	Part No
12.	Door Bottom (Specify LH or RH)	LRB040
13.	Door Skin Only (Specify LH or RH)	LRB003
-	Rear/Side Door Skin	LRB004
ALL ITEMS IN #14 ARE LESS OUTER PANEL		
14.	Old Style Fender (Lights in Grille)RH	LRB030
-	Old Style Fender (Lights in Grille)LH	LRB031
-	Late Style Fender (Lights in Fender) . IIARH	LRB032
-	Late Style Fender (Lights in Fender) . IIALH	LRB033
-	Late Style Fender (Lights in Fender) . IIIRH	LRB038
-	Late Style Fender (Lights in Fender) . IIILH	LRB039
-	Plug for Redundant Hole	338015
15.	Outer Wing Panel (No Heater Hole)RH	LRB034
-	Outer Wing Panel (With Heater Hole)RH	LRB035
-	Outer Wing Panel (No Heater Hole)LH	LRB036
-	Outer Wing Panel (With Heater HoleLH	LRB037
16.	Front Fender Panel (Headlights in Fender) ..RH	345623
-	Front Fender Panel (Headlights in Fender) ...LH	345624
17.	Sill Panel-Front (Narrow Type) ALL MODELS RH	337942
-	Sill Panel-Front (Narrow Type) ALL MODELS LH	337943
18.	Rear Sill Panel (Narrow Type) 88"RH	337938
-	Rear Sill Panel (Narrow Type) 88"LH	337939
19.	Rear Sill Panel (Narrow Type) Sta/Wgn 109" .RH	337710
-	Rear Sill Panel (Narrow Type) Sta/Wgn 109" .LH	337711

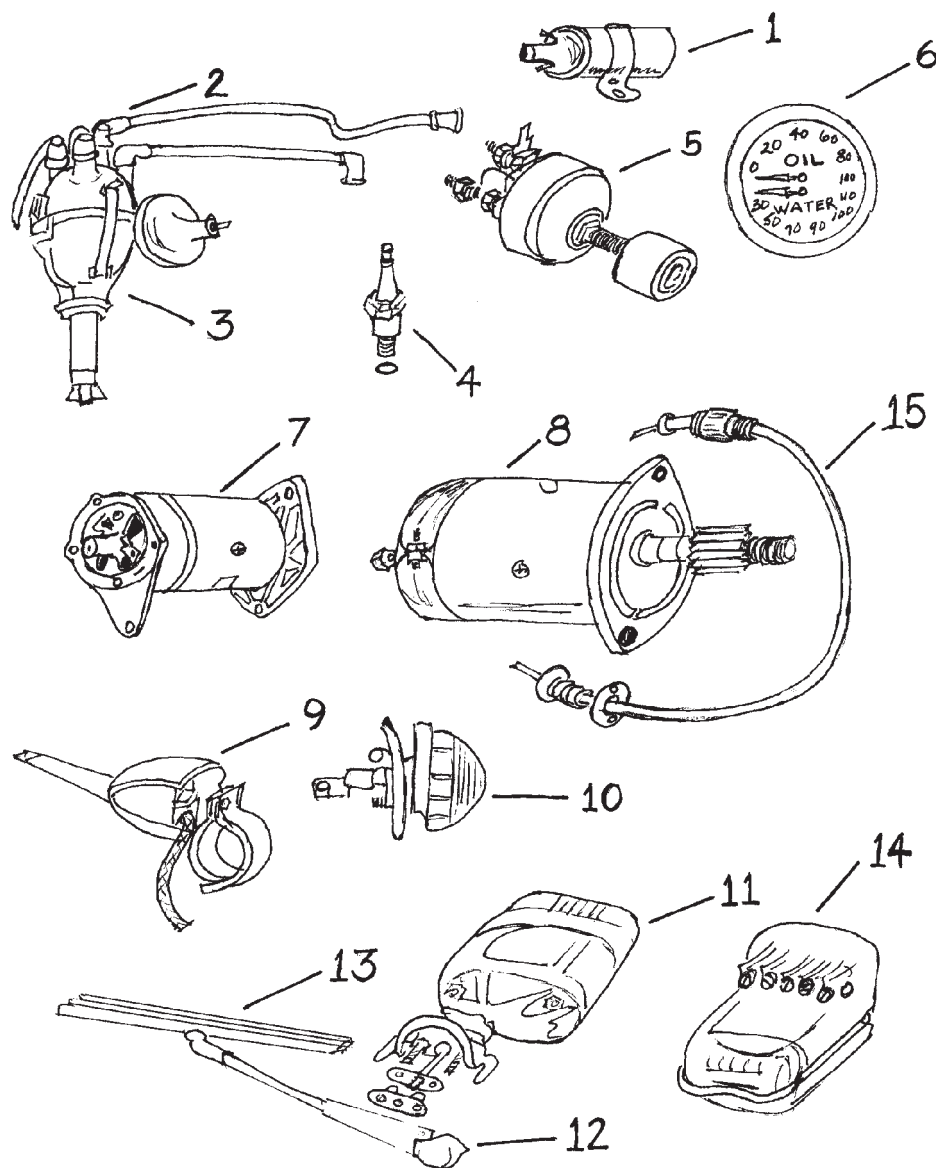
MISCELLANEOUS

-	Headlight Bucket (Fiberglass)	605073
-	Door Hinge Pin Kit - (Fits all IIA Doors and III Rear Doors) ...	330953
-	Flyscreens for Vents	395185
-	Vent Weatherstrip	330621
-	Rear Galvanized Body Corner AngleRH	333253
-	Rear Galvanized Body Corner AngleLH	333254

802-885-6660

D.A.P.
Enterprises Inc.

Fax 802-885-6662

ELECTRICAL

<u>Reference</u>	<u>Description</u>	<u>Part No.</u>
1.	Ignition Coil (12V)	LRE101
2.	Ignition Wire Set (4 Cylinder)	GHT173
3.	Lucas Replacement Distributor (Vacuum Advance Type)	LRE41630*
-	Distributor Cap for Replacement Type	LRI002
-	Rotor for Replacement Type	LRI005
-	Points for Replacement Type	LRI008
-	Condenser for Replacement Type	LRI007
-	Distributor Cap for Original Type Distributor	LRI003
-	Rotor for Original Type Distributor	LRI004
-	Points and Condenser Set for Original Type Distributor	LRI006
-	Distributor Vacuum Advance Unit -Original Type	LRE010
4.	Spark Plug (4 Cylinder)	LRI001
5.	Starter Switch (Old Style)	530034
-	Button for Old Style Starter Switch	605280
-	Early Ignition Switch, integrated with Headlight Switch	90/519775
-	Ignition Switch, Series IIA & III	551508
-	Starter Solenoid (Later Type)	RTC0461
6.	Dual Gauge	BA134
-	Flexible Steel Line for Above	279785
7.	Dynamo (C40)	LRE4012
-	Brushes for Above Dynamo	LRE4012B
-	Alternator (Early 1972 Type)	LRE1714
-	Alternator (All Others)	LRE1614
8.	Starter (Petrol) (4 & 6 Cylinder)	LRE2119
-	Starter (Diesel)	GEU430
-	Starter Armature	LRE013
9.	Turn Signal Switch IIA	90/519866
-	Turn Signal Switch III	575383
Continued.....		

* The original distributor has a cut out in the cap for the Side mounted terminal wire.
The replacement distributor does not have a cut out in the cap, the condenser wire comes out of the distributor body through a small boot.

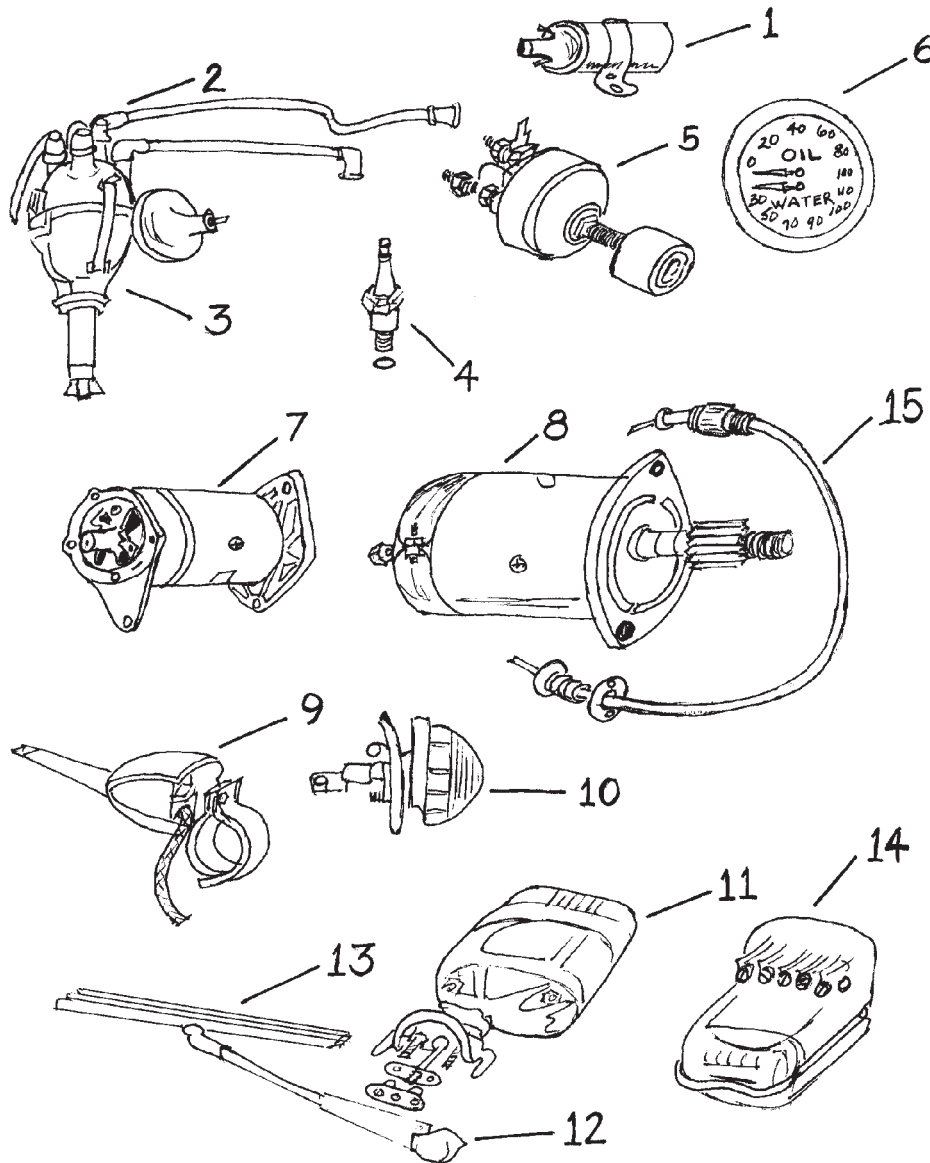
Some replacement engines, both five bearing and three bearing, utilize ducillier distributors. Points etc. need to be ordered by distributor and/or engine number.

802-885-6660

D.A.P.
Enterprises Inc.

Fax 802-885-6662

ELECTRICAL (continued)



<u>Reference</u>	<u>Description</u>	<u>Part No.</u>
10.	Front Parking Lamp Assy Late IIA & III (Clear Plastic Lens)589404
-	Turn Signal Lamp Assembly (Amber)589811**
-	Stop/Tail Lamp Assembly (Red)589419***
11.	Wiper Motor (Old Style)LRE012
-	Wiper Motor (Late IIA & Series III)LRE75664
-	Washer Nozzle348641
-	Wiper Motor 109" (2.6)LRE75801
12.	Replacement Wiper Arm (Hook Type End)LRA026
13.	Wiper Blade Fits Hook Type ArmsLRA027
-	Wiper Blade for Straight Push on ArmsLRA028
14.	Voltage Regulator (4 Cylinder)LRE37290
-	Voltage Regulator (6 Cylinder)LRE37576
15.	Speedometer Cable IIAGSD133
-	Speedometer Cable IIIGSD314
-	Speedometer Cable Screws078924

MISCELLANEOUS

- Fuse Box Cover, Series IIA505158
- Lucas FusesLRE001
- Screw in Type Bulb for DashLLB987
- Back up and Dome Lamp BulbLLB270
- Dip Switch--Series IIA541602
- Horn 12VLRE011
- License Plate Lamp AssemblyLRE003
- Heater Motors (Late IIA & III)LRE1202/03
- 3-Position Toggle SwitchLRE014

** Large amber (3") turn signal assembly is no longer manufactured. This lamp assembly looks identical but is smaller in diameter.

*** Series III Stop/Tail lamp and lens is no longer manufactured. This lamp assembly looks identical but is smaller in diameter.

802-885-6660

D.A.P.
Enterprises Inc.

Fax 802-885-6662