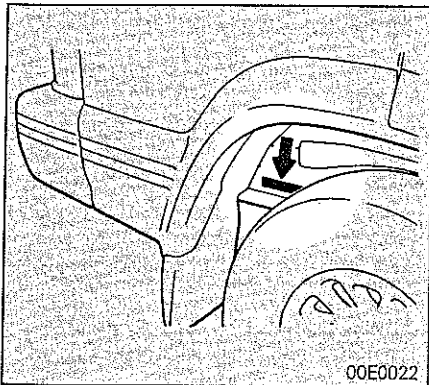


Specifications

Chassis number	270
Engine number	270
Vehicle information code plate	271
Dimensions	272
Performance	274
Weights	274
Engine	275
Transmission	276
Electrical system	277
Tyres and wheels	277
Other specifications	277
Capacities	278

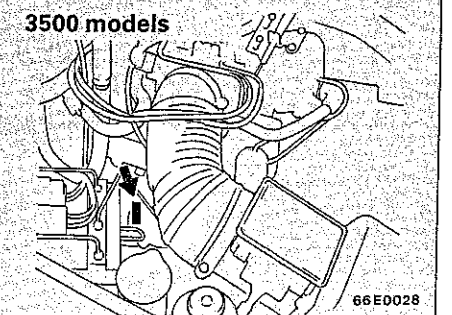
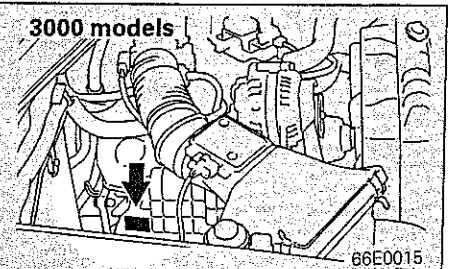
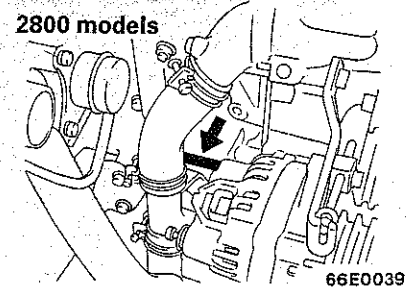
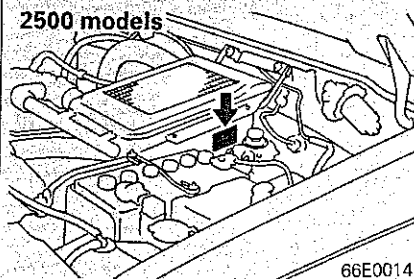
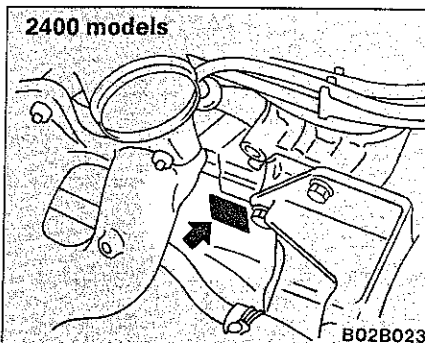
SPECIFICATIONS



Chassis number

EB02A-D

The chassis number is stamped as shown in the illustration.

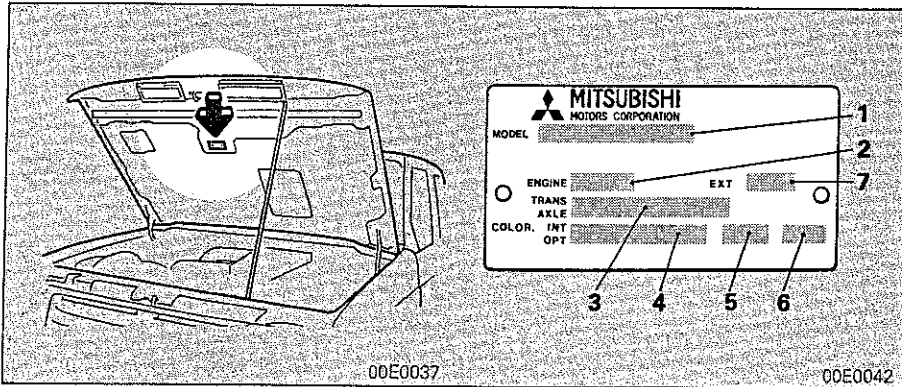


Engine number

EB02B-A

The engine number is stamped on the engine cylinder block as shown in the illustration.

SPECIFICATIONS



Vehicle information code plate

EB02C-Aa

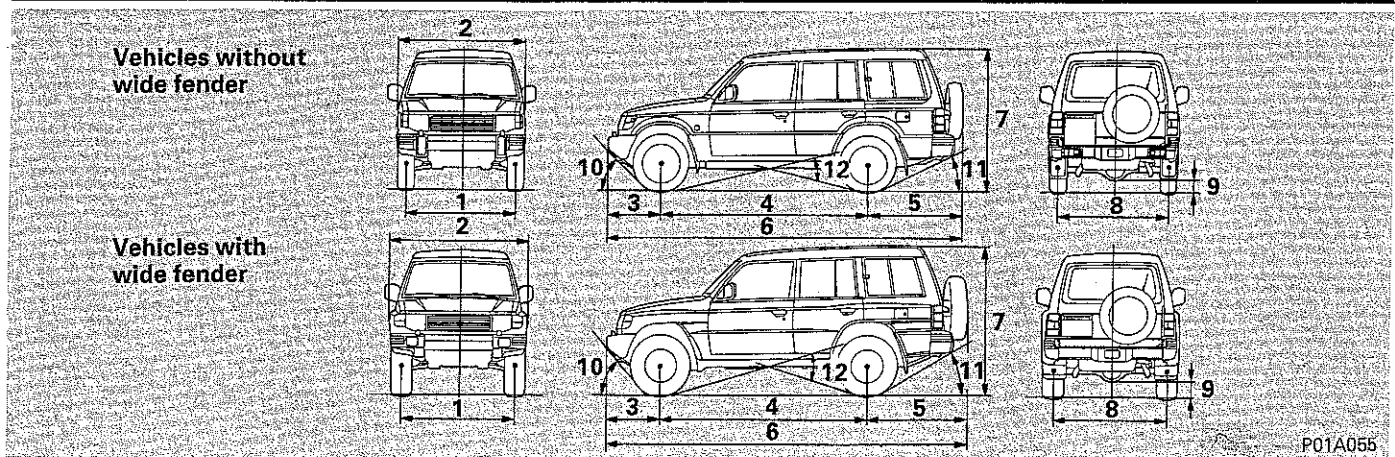
The vehicle information code plate is riveted as illustrated.

The plate shows model code, engine model, transmission model and body colour code, etc.

Please use this number when ordering replacement parts.

- 1 - Model code
- 2 - Engine model code
- 3 - Transmission model code
- 4 - Body colour code
- 5 - Interior code
- 6 - Option code
- 7 - Exterior code

SPECIFICATIONS



P01A055

Dimensions

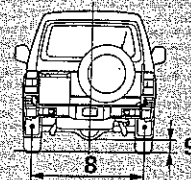
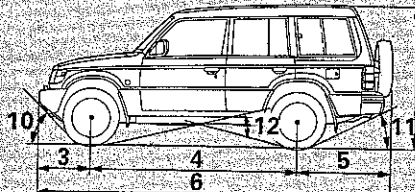
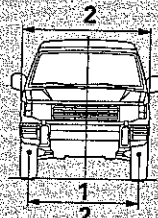
EP01AOAc

Item	Canvas top	Metal top	High roof wagon		Semi-high roof wagon		
	GL		GL	GLX	GL	GLX	
1	Front track						1,420 mm
2	Overall width						1,695 mm
3	Front overhang			720 mm	675 mm	720 mm	
4	Wheel base		2,725 mm				
5	Rear overhang		1,245 mm	1,240 mm	1,245 mm	1,240 mm	
6	Overall length		4,645 mm	4,685 mm	4,645 mm	4,685 mm	
7	Overall height (unladen)	1,980 mm	1,815 mm	1,955 mm ^{*1, *3}	1,955 mm	1,865 mm ^{*1} 1,895 mm ^{*2}	
8	Rear track						1,435 mm
9	Ground clearance (laden)			210 mm			
10	Approach angle			40.5°			
11	Departure angle			26.5°			
12	Ramp break over angle			23.5°			

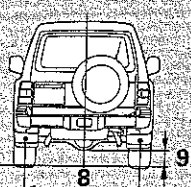
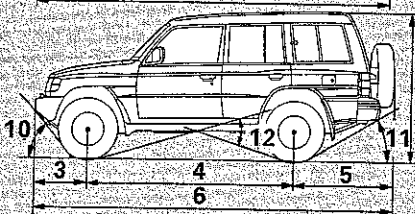
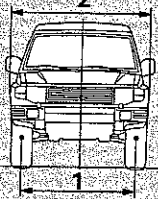
*1: 2400 models *2: 2800 models

SPECIFICATIONS

Vehicles without wide fender



Vehicles with wide fender



P01A055

Item	Metal top	Semi-high roof wagon	Metal top	Semi-high roof wagon
	GLS		3.5 V6-24	
1 Front track	1,465 mm			
2 Overall width	1,785 mm	1,775 mm	1,785 mm	1,775 mm
3 Front overhang	720 mm			
4 Wheel base	2,420 mm	2,725 mm	2,420 mm	2,725 mm
5 Rear overhang	1,015 mm	1,290 mm	1,015 mm	1,290 mm
6 Overall length	4,155 mm	4,735 mm	4,155 mm	4,735 mm
7 Overall height (unladen)	1,825 mm ^{*3} 1,855 mm ^{*4}	1,880 mm ^{*3} 1,910 mm ^{*2, *4}	1,855 mm	1,910 mm
8 Rear track	1,480 mm			
9 Ground clearance (laden)	225 mm ^{*4} 235 mm ^{*3}	215 mm ^{*2} 225 mm ^{*3, *4}	215 mm	
10 Approach angle	42.0°			
11 Departure angle	36.0°	27.0°	38.5°	27.0°
12 Ramp break over angle	28.5°	24.5°	28.5°	24.5°

*3: 2500 models *4: 3000 models

SPECIFICATIONS

Performance

Item	2400	2500	2800	3000	3500
Maximum speed	152 km/h*1 153 km/h*2 155 km/h*3 156 km/h*4	120 km/h*5 118 km/h*7 123 km/h*2 140 km/h*8 141 km/h*6 139 km/h*9	145 km/h 136 km/h*1	174 km/h*10 165 km/h*11	188 km/h*10 178 km/h*11
Maximum climbing ability (in 1st gear)	35°				
Minimum turning radius (wheel)	5.3 m/5.9 m*12				

*1: High roof wagon GL, Semi-high roof wagon GL

*2: Metal top GL

*3: High roof wagon GLX

*4: Semi-high roof wagon GLX

*5: Canvas top

*6: Metal top GLS

*7: High roof wagon

*8: Semi-high roof wagon M/T

*9: Semi-high roof wagon A/T

*10: Models with manual transmission

*11: Models with automatic transmission

*12: High roof wagon, Semi-high roof wagon

Weights

Item	Canvas top		Metal top			Semi-high roof, High roof								
	2500	2400	2500	3000	3500	2400		2500		2800		3000	3500	
						GL	GLX	GL	GLS	GL	GLX	GLS		
Kerb weight	1,560 kg	1,510 kg	1,550 kg, 1,645 kg*1, 1,785 kg*2	1,785 kg	1,845 kg	1,735 kg	1,790 kg	1,765 kg	1,990 kg*3, 1,980 kg*4	1,870 kg, 1,950 kg*1	1,920 kg	2,085 kg*3, 2,090 kg*4	1,960 kg*3, 1,955 kg*4	2,035 kg*3, 2,030 kg*4
Maximum gross vehicle weight	2,200 kg, 2,510 kg*1, 2,350 kg*5, *6, *8					2,500 kg		2,500 kg		2,500 kg, 2,550 kg*7, *8				
Maximum axle weight	Front	1,100 kg, 1,150 kg*2, *8												
	Rear	1,450 kg, 1,600 kg*5, *6, *8					1,600 kg, 1,780 kg*7, *8							
Seating capacity (including driver)	7 persons	5 persons			9 persons	7 persons	9 persons	7 persons	9 persons	7 persons				

*1: Vehicles for Hongkong

*2: GLS

*3: Models with manual transmission

*4: Models with automatic transmission

*5: 2500 I/C T/C models

*6: 3000 models

*7: 2800 I/C T/C models

*8: 3500 models

SPECIFICATIONS

Engine

Item	2400	2500	2500 INTER-COOLER TURBO
Engine type	Four-cylinder, in line, water-cooled, overhead camshaft	Four-cylinder, in line, water-cooled, overhead camshaft	Four-cylinder, in line, water-cooled, overhead camshaft, With turbocharger and intercooler
Engine model	4G64	4D56	4D56 INTER-COOLER TURBO
Total displacement	2,350 cc		2,477 cc
Bore	91.1 mm		91.1 mm
Stroke	98.0 mm		95.0 mm
Compression ratio	8.2 : 1		21.0 : 1
Firing order	1-3-4-2		—
Maximum output (DIN)	86 kW/5,000 r/min	53 kW/4,200 r/min	73 kW/4,200 r/min
Maximum torque (DIN)	188 Nm/2,000 r/min	147 Nm/2,000 r/min	240 Nm/2,000 r/min

Item	2800	2800 INTER-COOLER TURBO	3000	3500
Engine type	Four-cylinder, in line, water-cooled, overhead camshaft	Four-cylinder, in line, water-cooled, overhead camshaft, With turbocharger and intercooler	Six-cylinder, 60°V, water-cooled, four-cycle, Single overhead camshaft	Six-cylinder, 60°V, water-cooled, four-cycle, Double overhead camshaft
Engine model	4M40	4M40 INTER-COOLER TURBO	6G72	6G74
Total displacement		2,835 cc	2,972 cc	3,497 cc
Bore		95.0 mm	91.1 mm	93.0 mm
Stroke		100.0 mm	76.0 mm	85.8 mm
Compression ratio		21.0 : 1	9.0 : 1	9.5 : 1
Firing order		—	1-2-3-4-5-6	1-2-3-4-5-6
Maximum output (DIN)	71 kW/4,000 r/min	92 kW/4,000 r/min	133 kW/5,500 r/min	153 kW/5,000 r/min
Maximum torque (DIN)	198 Nm/2,000 r/min	292 Nm/2,000 r/min	255 Nm/4,500 r/min	300 Nm/3,000 r/min

SPECIFICATIONS

Transmission

Item		M/T				
		2400, 2800	2500	2500 INTERCOOLER TURBO 3000	2800 INTERCOOLER TURBO	3500
Type		5 - speed manual transmission				
Transmission gear ratio	1st	3.967	4.330	3.918	3.952	3.952
	2nd	2.136	2.355	2.261	2.238	2.238
	3rd	1.360	1.509	1.395	1.398	1.398
	4th	1.000	1.000	1.000	1.000	1.000
	5th	0.856	0.827	0.829	0.761	0.819
	Reverse	3.578	4.142	3.925	3.553	3.553
Transfer gear ratio	High	1.000				
	Low	1.925		1.900		

Item		A/T		
		2800 INTERCOOLER TURBO	2500 INTERCOOLER TURBO	3000, 3500
Type		4 - speed automatic transmission		
Transmission gear ratio	1st	2.804	2.826	2.804
	2nd	1.531	1.493	1.531
	3rd	1.000	1.000	1.000
	4th	0.705	0.730	0.754
	5th	---	---	---
	Reverse	2.393	2.703	2.393
Transfer gear ratio	High	1.000		
	Low	1.900	1.925	1.900

SPECIFICATIONS

Electrical system

Item		2400	3000	3500	2500	2800
Voltage		12 V				
Battery	Type	< L.H. drive vehicles > 48D26R or 75D26R* ³ < R.H. drive vehicles > 55D23R or 75D23R* ³	55D23R, 75D26R* ³ or 95D31R* ³	55D23R or 95D31R* ³	95D31R	95D31R or 95D31R × 2* ²
	Capacity (5HR)	40Ah or 52Ah* ³	48Ah, 52Ah* ³ or 64Ah* ³	48Ah or 64 Ah* ³	64Ah	64Ah or 64Ah × 2* ²
Alternator capacity		75A	90A	90A	65A or 75A* ¹	75A* or 90A
Spark plug type		NGK DENSO	BK5E K16P-U	BP5ES W16EP	BKR5E K16PR-U	—

*1: Semi-high roof wagon *2: Vehicles for Russia *3: Option

Tyres and wheels

Item		GL, GLX	GLS
Tyre	size	205 R16 104Q(S), 235/75R15 105S* ¹ , 205/80R16 104S(Q)* ² or 7.50-16-6PRLT* ²	31 × 10.5R15 6PRLT or 265/70R16 112H* ²
Wheel	size	16 × 6JJ or 16 × 5.50F* ² , 15 × 6JJ* ¹	15 × 7JJ or 16 × 7JJ* ²
	offset	33 mm (1.30 in.)	10 mm (0.39 in.)

*1: Vehicles for Russia *2: Option

Other specifications

Item		2400	3000, 3500	2500, 2800
Fuel system	Fuel control	Carburettor with automatic choke* ¹ , Electronic controlled injection* ²	Electronic controlled injection	Injection
	Fuel pump	Mechanical diaphragm type* ¹ , Electric motor type* ²	Electric motor type	Mechanical vane type
Clutch		Dry single disc clutch with diaphragm spring, hydraulic action		
Steering system		Recirculating ball type, power assisted* ⁴		
Suspension	Front	Independent type, wishbone, torsion bar		
	Rear	Rigid type, leaf spring/ Rigid type, three-link, coil spring* ³		
Service brakes	Type	Hydraulic, double circuit brake system with power assistance, anti-skid brake* ⁴		
	Front	Ventilated disc		
	Rear	Drum/Drum in disk* ³		
Parking brakes		Parking brake acts mechanically on rear wheels		

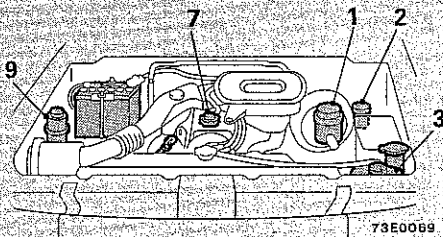
*1: GL *2: GLX *3: GLS *4: Option

SPECIFICATIONS

Capacities

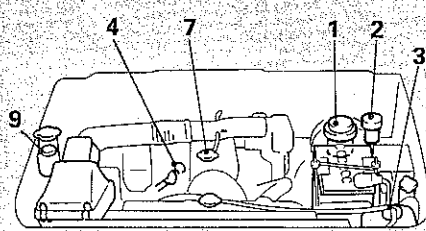
EQ02A0Ad

[L.H.D.] 2400 models
2400 (Carburettor type) models



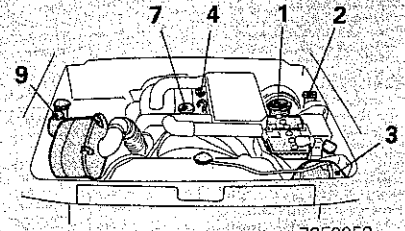
73E0069

2400 (Fuel injection type) models



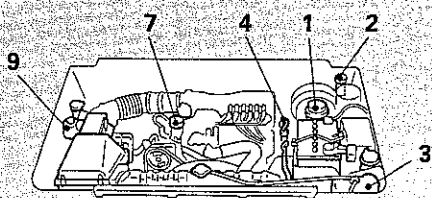
Q02A145

2500, 2800 models



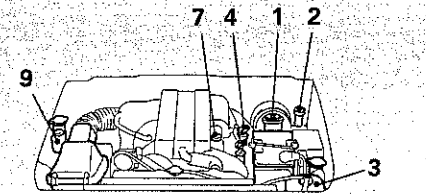
73E0058

3000 models



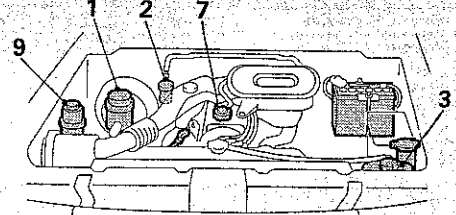
Q02A063

3500 models



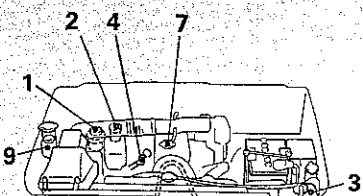
73E0093

[R.H.D.] 2400 models
2400 (Carburettor type) models



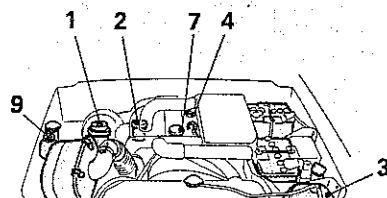
73E0070

2400 (Fuel injection type) models



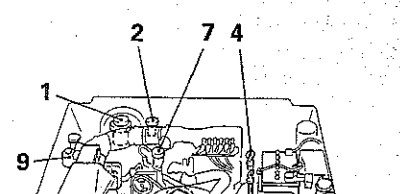
Q02A186

2500, 2800 models



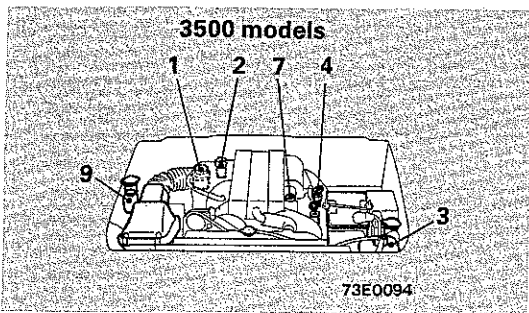
73E0067

3000 models



Q02A064

SPECIFICATIONS



No.	Items		Quantity	Recommended lubricants
1	Brake fluid		As required	Brake fluid DOT3 or DOT4
2	Clutch fluid			
3	Engine coolant	2400 models	Vehicles without rear heater	High-quality ethylen glycol [includes 0.6 litre (0.63 U.S.qt., 0.53 Imp.qt.) in the reserve tank]
			Vehicles with rear heater	
		Other models	Vehicles without rear heater	
			Vehicles with rear heater	
4	Automatic transmission fluid		2500 models	"ATF DEXRON II" or equivalent
			2800, 3000, 3500 models	
5	Manual transmission oil	Super select 4WD models	2500, 3000 models	Hypoid gear oil (API classification: API GL-4/SAE viscosity: SAE 80W or 75W-85W)
			2800, 3500 models	
		Part time 4WD models		
6	Transfer oil	without mechanical winch	2400, 2500, 3000 models	
			2800, 3500 models	
		with mechanical winch	2400, 2500, 3000 models	
			2800, 3500 models	

SPECIFICATIONS

No.	Items		Quantity	Recommended Lubricants			
7	Engine oil	2400 models		Oil pan	4.5 litres (4.8 U.S.qts., 4.0 Imp.qts.)	Refer to page 256.	
				Oil filter	0.3 litre (0.32 U.S.qt., 0.26 Imp.qt.)		
		2500 models	without turbo-charger	Oil pan	5.5 litres (5.8 U.S.qts., 4.8 Imp.qts.)		
				Oil filter	0.8 litre (0.85 U.S.qt., 0.70 Imp.qt.)		
				Oil cooler	0.3 litre (0.32 U.S.qt., 0.26 Imp.qt.)		
				Oil pan	5.5 litres (5.8 U.S.qts., 4.8 Imp.qts.)		
				Oil filter	0.8 litre (0.85 U.S.qt., 0.70 Imp.qt.)		
				Oil cooler	0.4 litre (0.42 U.S.qt., 0.35 Imp.qt.)		
		2800 models		Oil pan	5.5 litres (5.8 U.S.qts., 4.8 Imp.qts.)		
				Oil filter	1.0 litre (1.1 U.S.qts., 0.88 Imp.qt.)		
				Oil cooler	1.3 litres (1.4 U.S.qts., 1.1 Imp.qts.)		
3000, 3500 models		Oil pan	4.3 litres (4.5 U.S.qts., 3.8 Imp.qts.)				
		Oil filter	0.3 litre (0.32 U.S.qt., 0.26 Imp.qt.)				
		Oil cooler	0.3 litre (0.32 U.S.qt., 0.26 Imp.qt.)				
8	Differential oil	Front differential			1.2 litres (1.3 U.S.qts., 1.1 Imp.qts.)	Hypoid gear oil (API classification: API GL-5 or higher/SAE viscosity: Above 10°C SAE 90, Below 10°C SAE 80W)	
		Rear differential	except for mechanical type limited slip differential	TYPE 1	1.8 litres (1.9 U.S.qts., 1.6 Imp.qts.)		
				TYPE 2	2.6 litres (2.7 U.S.qts., 2.3 Imp.qts.)		
				TYPE 3	3.2 litres (3.4 U.S.qts., 2.8 Imp.qts.)		
				TYPE 1	1.8 litres (1.9 U.S.qts., 1.6 Imp.qts.)		MITSUBISHI Genuine Gear Oil, Part No.8149630 EX or CASTROL HYPOY LS (API classification: API GL-5/SAE viscosity: SAE 90)
				TYPE 2	2.6 litres (2.7 U.S.qts., 2.3 Imp.qts.)		
		TYPE 3	3.2 litres (3.4 U.S.qts., 2.8 Imp.qts.)				
9	Power steering fluid			1.0 litre (1.1 U.S.qts., 0.88 Imp.qt.)	Automatic transmission fluid DEXRON II or DEXRON		
10	Refrigerant	Single air conditioning	2800 models	500 g (18 oz.)	HFC-134a		
			Other models	600 g (21 oz.)			
		Dual air conditioning	2800 models	850 g (30 oz.)			
			Other models	1,000 g (35 oz.)			

TYPE 1: Standard size differential [(3 door models: except for vehicles with differential lock and vehicles for Hong Kong, 3000, 3500 models)

(5 door models: 2500 without turbocharger models and vehicles for Russia)]

TYPE 2: Large size differential [(3 door models: vehicles with differential lock and vehicles for Hong Kong, 3000 models)

(5 door models: 3000 models and 2500 with turbocharger models 2800 without turbocharger models except for Russia)]

TYPE 3: Large size differential [(3 door models: 3500 models)

(5 door models: 2800 with turbocharger models and 3500 models)]

NOTE

Points requiring routine inspection or replenishment such as the engine oil, coolant, automatic transmission fluid, brake fluid are marked white for easy identification.